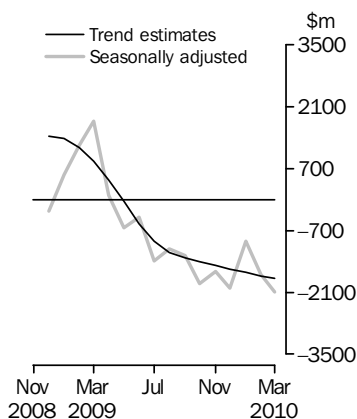


# INTERNATIONAL TRADE IN GOODS AND SERVICES

AUSTRALIA

EMBARGO: 11.30AM (CANBERRA TIME) THURS 6 MAY 2010

## Balance on Goods and Services



## KEY FIGURES

	Jan 2010	Feb 2010	Mar 2010	Feb 10 to Mar 10 %
	\$m	\$m	\$m	change
<b>BALANCE ON GOODS AND SERVICES</b>				
Trend estimates	-1 645	-1 724	-1 782	..
Seasonally adjusted	-951	-1 701	-2 082	..
<b>CREDITS (Exports of goods &amp; services)</b>				
Trend estimates	20 072	20 230	20 337	1
Seasonally adjusted	20 413	20 135	20 441	2
<b>DEBITS (Imports of goods &amp; services)</b>				
Trend estimates	21 717	21 954	22 119	1
Seasonally adjusted	21 365	21 836	22 524	3

.. not applicable

## KEY POINTS

### BALANCE ON GOODS AND SERVICES

- The trend estimate of the *balance on goods and services* was a deficit of \$1,782m in March 2010, an increase of \$58m on the revised deficit in February 2010.
- In seasonally adjusted terms, the *balance on goods and services* was a deficit of \$2,082m in March 2010, an increase of \$381m on the revised deficit in February 2010.

### CREDITS (EXPORTS OF GOODS & SERVICES)

- In seasonally adjusted terms, *goods and services credits* rose \$306m (2%) to \$20,441m. *Non-monetary gold* rose \$308m (34%), *rural goods* rose \$46m (2%) and *services credits* rose \$37m (1%). *Non-rural goods* fell \$86m (1%).

### DEBITS (IMPORTS OF GOODS & SERVICES)

- In seasonally adjusted terms, *goods and services debits* rose \$688m (3%) to \$22,524m. *Intermediate and other merchandise goods* rose \$694m (10%), *non-monetary gold* rose \$128m (27%), *capital goods* rose \$64m (2%) and *services debits* rose \$11m. *Consumption goods* fell \$210m (4%).

## INQUIRIES

For further information contact Olivia Lam on Canberra (02) 6252 7406 for Goods, and Fleur Butt on Canberra (02) 6252 5427 for Services.

# NOTES

## FORTHCOMING ISSUES

ISSUE	RELEASE DATE
April 2010	3 June 2010
May 2010	6 July 2010
June 2010	4 August 2010
July 2010	2 September 2010
August 2010	5 October 2010
September 2010	4 November 2010

.....

## REVISIONS

Table 17 summarises revisions, in original current price terms, since the last issue of this publication, for the last three financial years and last six months.

Revisions have been made to incorporate the latest data relating to merchandise trade and international trade in services. In original terms, these revisions have:

- decreased the deficit on goods and services for February 2010 by \$152m
- decreased the deficit on goods and services for the eight months to February 2010 by \$285m
- increased the surplus on goods and services for 2008–09 by \$71m.

Seasonally adjusted and trend series are revised due to the incorporation of revised estimates, incorporation of estimates for the latest month and the rederivation of seasonal factors under the concurrent seasonal adjustment methodology.

## CHANGES IN FORTHCOMING ISSUES

The May 2010 issue of this publication and the June quarter 2010 issue of *Balance of Payments and International Investment Position, Australia* (cat. no. 5302.0) will introduce a change of treatment for the civil aircraft component. A new component 'Civil aircraft and confidentialised items' will be introduced. It will include Civil aircraft for all periods, and from July 2008 will include all commodities subject to a 'no commodity details' or 'no value details' restriction. This change will affect the statistics presented in Capital goods n.e.s. from December 2008 and Other merchandise goods for July and August 2008, but will not revise the total value of goods debits.

All civil aircraft have been confidentialised since December 2008, and therefore the components making up the 'Civil aircraft and confidentialised items' series will not be available at a lower level on a balance of payments basis.

## CHANGES IN TRADE IN SERVICES DATA CUBES

Calendar year trade in services data cubes (cat. no. 5368.0.55.004) previously included Table 9 which provided detailed services data on a calendar year basis. These datacubes are released and therefore updated with revisions once a year. Since the November 2009 issue, this publication presents quarterly detailed services, from which users can compile calendar or financial year data at any point in time, enabling the latest revisions to be included in the estimates. As a result, the previous table 9 will no longer be issued and tables in the calendar year data cubes, due for release on 14 May 2010, will be re-numbered. Tables 10, 11 and 12 will now be released as Tables 9, 10 and 11.

Brian Pink  
Australian Statistician

# CONTENTS

page

Time series data . . . . .	4
----------------------------	---

## ANALYSIS

Analysis and comments . . . . .	5
---------------------------------	---

## TABLES

### INTERNATIONAL TRADE IN GOODS AND SERVICES – BALANCE OF PAYMENTS BASIS

<b>1</b> Goods and services, summary, seasonally adjusted and trend estimates . . . . .	10
<b>2</b> Goods and services, summary, original . . . . .	11
<b>3</b> Goods credits, original . . . . .	12
<b>4</b> Goods debits, original . . . . .	13
<b>5</b> Goods credits, seasonally adjusted . . . . .	14
<b>6</b> Goods debits, seasonally adjusted . . . . .	15
<b>7</b> Goods credits, trend estimates . . . . .	16
<b>8</b> Goods debits, trend estimates . . . . .	17
<b>9</b> Services, summary, original . . . . .	18
<b>10</b> Services, summary, seasonally adjusted and trend estimates . . . . .	19
<b>11</b> Services, original, quarterly . . . . .	20

### INTERNATIONAL MERCHANDISE TRADE – RECORDED TRADE BASIS

<b>12</b> International merchandise exports, by commodity . . . . .	21
<b>13</b> International merchandise imports, by commodity . . . . .	24
<b>14</b> International merchandise trade, by country and country groups . . . . .	27
<b>15</b> International merchandise trade, by state . . . . .	28

### OTHER TABLES

<b>16</b> Period average exchange rates per Australian dollar . . . . .	29
<b>17</b> Summary of revisions, goods and services, original . . . . .	30

## OTHER INFORMATION

Explanatory Notes . . . . .	31
Appendix – Related articles . . . . .	37

## TIME SERIES DATA

### TIME SERIES DATA

Data is available free on the ABS website include longer time series of tables in this publication and the additional spreadsheets and data cubes listed below.

- 31 Merchandise exports by Broad Economic Category (BEC)
- 32a Merchandise exports, Industry (ANZSIC 2006), FOB Value
- 32b Merchandise exports, Industry (ANZSIC 1993), FOB Value
- 33 Merchandise imports by Broad Economic Category (BEC)
- 34 Merchandise imports by Balance of Payments Broad Economic Category (BoPBEC)
- 35a Merchandise imports, Industry (ANZSIC 2006), Customs Value
- 35b Merchandise imports, Industry (ANZSIC 1993), Customs Value
- 36 Merchandise exports, state by country and country groups
- 37 Merchandise imports, state by country and country groups
- 91 Monthly seasonal adjustment factors and forward factors for 12 months.

### TRADE IN SERVICES DATA CUBES

Calendar year data cubes (cat. no. 5368.0.55.004) are updated after the March issue of this publication. These data cubes will be released on 14 May 2010. The tables will be re-numbered as shown below.

The following tables will be included in the calendar year data cubes:

- 1 International trade in services, credits, state by year
- 2 International trade in services, credits, year by state
- 3 International trade in services, debits, state by year
- 4 International trade in services, debits, year by state
- 5 International trade in services, credits, year by country and service
- 6 International trade in services, credits, service by year and by country
- 7 International trade in services, debits, year by country and service
- 8 International trade in services, debits, service by year and by country
- 9 International trade in services, credits, year by country and travel service
- 10 International trade in services, debits, year by country and travel service
- 11 International trade in services, credits, education related travel, by educational sector, by type of expenditure by year.

Financial year data cubes (cat. no. 5368.0.55.003) are updated after the September issue of this publication.

## ANALYSIS AND COMMENTS

### BALANCE ON GOODS AND SERVICES

The trend estimate of the balance on goods and services was a deficit of \$1,782m in March 2010, an increase of \$58m on the revised deficit in February 2010.

In seasonally adjusted terms, the balance on goods and services was a deficit of \$2,082m in March 2010, an increase of \$381m on the revised deficit in February 2010.

The sum of the seasonally adjusted balances for the three months to March 2010 was a deficit of \$4,734m, a decrease of \$808m on the deficit of \$5,542m for the three months to December 2009. However, if the seasonal factors used in compiling quarterly Balance of Payments are applied, the March quarter 2010 deficit was \$4,618m, a decrease of \$989m on the revised December quarter 2009 deficit of \$5,607m.

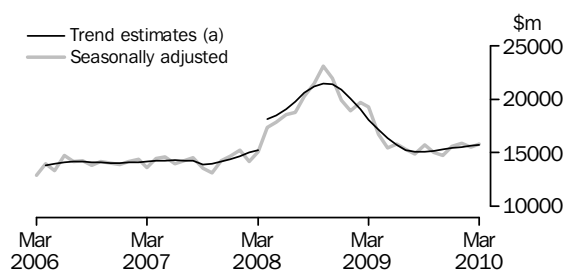
### EXPORTS OF GOODS AND SERVICES

Between February 2010 and March 2010 the trend estimate of goods and services credits rose \$107m (1%) to \$20,337m.

In seasonally adjusted terms, goods and services credits rose \$306m (2%) to \$20,441m. Non-monetary gold rose \$308m (34%), rural goods rose \$46m (2%) and services credits rose \$37m (1%). Non-rural goods fell \$86m (1%).

#### Exports of goods

#### GOODS CREDITS



(a) Trend breaks of \$500m to April 2006 and \$2,725m to April 2008 have been applied.

#### RURAL GOODS

In trend terms, exports of rural goods rose \$39m (2%) to \$2,146m.

In seasonally adjusted terms, exports of rural goods rose \$46m (2%) to \$2,160m.

The main components contributing to the rise in seasonally adjusted estimates were:

- cereal grains and cereal preparations, up \$56m (14%)
- meat and meat preparations, up \$32m (7%).

Partly offsetting these increases was the other rural component, down \$49m (5%).

#### NON-RURAL GOODS

In trend terms, exports of non-rural goods rose \$66m (1%) to \$12,521m.

In seasonally adjusted terms, exports of non-rural goods fell \$86m (1%) to \$12,434m.

The main component contributing to the fall in seasonally adjusted estimates was coal, coke and briquettes, down \$371m (14%).

Partly offsetting this decrease was the other mineral fuels component, up \$232m (14%).

## ANALYSIS AND COMMENTS *continued*

### *Exports of goods continued*

#### NET EXPORTS OF GOODS UNDER MERCHANTING

In trend terms, net exports of goods under merchanting rose \$1m (5%) to \$21m.

In seasonally adjusted terms, net exports of goods under merchanting remained steady at \$23m.

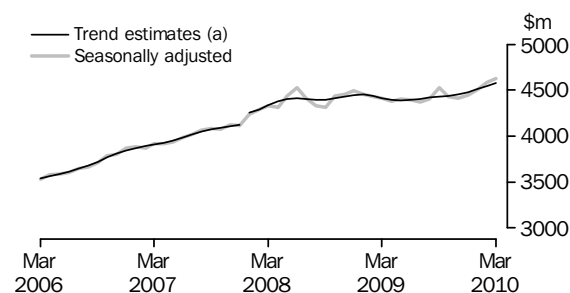
#### NON-MONETARY GOLD

In trend terms, exports of non-monetary gold fell \$29m (3%) to \$1,073m.

In seasonally adjusted terms, non-monetary gold rose \$308m (34%) to \$1,202m.

### *Exports of services*

#### SERVICES CREDITS



(a) A trend break of \$106m has been applied to January 2008.

In trend terms, services credits rose \$30m (1%) to \$4,576m.

In seasonally adjusted terms, services credits rose \$37m (1%) to \$4,622m.

The main component contributing to the rise in the seasonally adjusted estimates was travel services, up \$35m (1%).

In seasonally adjusted terms, tourism related services credits rose \$29m (1%) to \$3,139m.

### IMPORTS OF GOODS AND SERVICES

Between February 2010 and March 2010 the trend estimate of goods and services debits rose \$165m (1%) to \$22,119m.

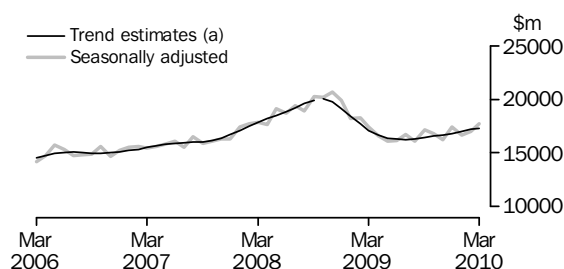
In seasonally adjusted terms, goods and services debits rose \$688m (3%) to \$22,524m.

Intermediate and other merchandise goods rose \$694m (10%), non-monetary gold rose \$128m (27%), capital goods rose \$64m (2%) and services debits rose \$11m. Consumption goods fell \$210m (4%).

Preliminary analysis shows that, in seasonally adjusted terms, goods imports volumes increased about 1.3% during the March quarter 2010 and the implicit price deflator rose 0.2%. In original terms, the Chain Laspeyres price index rose about 0.3% while the implicit price deflator rose 0.1%. The final volume and price outcomes will be published in the March quarter 2010 issue of *Balance of Payments and International Investment Position, Australia* (cat. no. 5302.0).

Imports of goods

GOODS DEBITS



(a) A trend break of \$167m has been applied to Capital goods n.e.s. debits and related aggregates in October 2008.

CONSUMPTION GOODS

In trend terms, imports of consumption goods rose \$29m (1%) to \$5,194m.

In seasonally adjusted terms, imports of consumption goods fell \$210m (4%) to \$5,143m.

The main components contributing to the fall in the seasonally adjusted estimates were:

- consumption goods n.e.s., down \$97m (6%)
- non-industrial transport equipment, down \$82m (5%).

CAPITAL GOODS

In trend terms, imports of capital goods rose \$44m (1%) to \$4,069m.

In seasonally adjusted terms, imports of capital goods rose \$64m (2%) to \$4,085m.

The components contributing to the rise in the seasonally adjusted estimates were:

- capital goods n.e.s., up \$104m (11%)
- telecommunications equipment, up \$66m (15%)
- industrial transport equipment n.e.s., up \$38m (6%).

Partly offsetting these rises was the machinery and industrial equipment component, down \$125m (9%).

INTERMEDIATE AND OTHER MERCHANDISE GOODS

In trend terms, imports of intermediate and other merchandise goods rose \$60m (1%) to \$7,563m.

In seasonally adjusted terms, imports of intermediate and other merchandise goods rose \$694m (10%) to \$7,880m.

The main components contributing to the rise in the seasonally adjusted estimates were:

- other merchandise goods, up \$282m
- fuels and lubricants, up \$263m (13%)
- other parts for capital goods, up \$114m (10%).

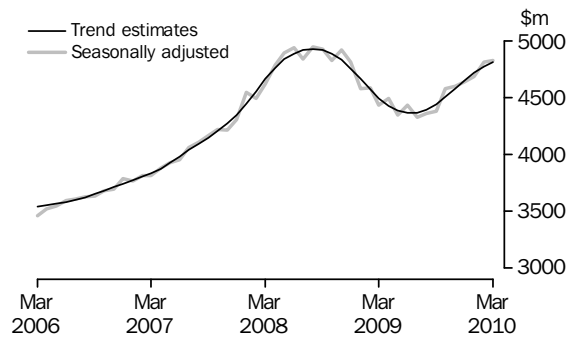
NON-MONETARY GOLD

In trend terms, imports of non-monetary gold fell \$13m (3%) to \$479m.

In seasonally adjusted terms, non-monetary gold debits rose \$128m (27%) to \$595m.

Imports of services

SERVICES DEBITS



In trend terms, services debits rose \$44m (1%) to \$4,814m.

In seasonally adjusted terms, services debits rose \$11m to \$4,821m.

The main components contributing to the rise in the seasonally adjusted estimates were:

- transport services, up \$34m (3%)
- travel services, up \$6m.

Partly offsetting these increases was the maintenance and repair services n.i.e. component down \$33m (62%).

In seasonally adjusted terms, tourism related services debits rose \$17m (1%) to \$2,556m.





## GOODS AND SERVICES (a), Summary—Seasonally Adjusted and Trend Estimates

	Apr 2009	May 2009	Jun 2009	Jul 2009	Aug 2009	Sep 2009	Oct 2009	Nov 2009	Dec 2009	Jan 2010	Feb 2010	Mar 2010
	\$m	\$m	\$m	\$m	\$m	\$m	\$m	\$m	\$m	\$m	\$m	\$m
SEASONALLY ADJUSTED												
<b>BALANCE</b>												
<b>On goods and services</b>	<b>92</b>	<b>-629</b>	<b>-405</b>	<b>-1 386</b>	<b>-1 123</b>	<b>-1 266</b>	<b>-1 907</b>	<b>-1 633</b>	<b>-2 002</b>	<b>-951</b>	<b>-1 701</b>	<b>-2 082</b>
<b>CREDITS</b>												
Total goods and services	21 130	19 829	20 173	19 683	19 327	20 253	19 488	19 188	20 052	20 413	20 135	20 441
<b>Total goods</b>	<b>16 750</b>	<b>15 428</b>	<b>15 778</b>	<b>15 309</b>	<b>14 925</b>	<b>15 727</b>	<b>15 062</b>	<b>14 774</b>	<b>15 608</b>	<b>15 911</b>	<b>15 551</b>	<b>15 819</b>
Rural goods(b)	2 435	2 311	2 297	2 213	2 120	2 017	1 860	1 965	2 084	2 093	2 114	2 160
Non-rural goods(b)	12 964	12 114	12 315	12 222	11 930	12 292	12 032	11 669	12 433	12 555	12 520	12 434
Net exports of goods under merchandise(c)	25	25	25	39	39	41	15	15	15	23	23	23
Non-monetary gold(c)	1 325	978	1 141	835	836	1 378	1 155	1 125	1 076	1 240	894	1 202
<b>Total services</b>	<b>4 381</b>	<b>4 400</b>	<b>4 395</b>	<b>4 374</b>	<b>4 402</b>	<b>4 526</b>	<b>4 426</b>	<b>4 414</b>	<b>4 444</b>	<b>4 502</b>	<b>4 585</b>	<b>4 622</b>
<b>DEBITS</b>												
Total goods and services	-21 038	-20 457	-20 578	-21 069	-20 450	-21 519	-21 395	-20 821	-22 054	-21 365	-21 836	-22 524
<b>Total goods</b>	<b>-16 549</b>	<b>-16 113</b>	<b>-16 147</b>	<b>-16 745</b>	<b>-16 089</b>	<b>-17 141</b>	<b>-16 817</b>	<b>-16 223</b>	<b>-17 413</b>	<b>-16 682</b>	<b>-17 026</b>	<b>-17 702</b>
Consumption goods	-5 053	-5 023	-5 181	-5 234	-4 923	-5 092	-5 024	-5 055	-4 969	-5 090	-5 353	-5 143
Capital goods	-3 784	-3 539	-3 675	-3 836	-3 925	-3 999	-4 059	-3 758	-4 010	-3 964	-4 021	-4 085
Intermediate and other merchandise goods	-7 128	-6 667	-6 946	-7 420	-6 686	-7 314	-7 063	-6 969	-7 769	-7 277	-7 186	-7 880
Non-monetary gold(c)	-584	-884	-346	-255	-555	-737	-672	-441	-665	-351	-467	-595
<b>Total services</b>	<b>-4 489</b>	<b>-4 344</b>	<b>-4 431</b>	<b>-4 324</b>	<b>-4 361</b>	<b>-4 378</b>	<b>-4 578</b>	<b>-4 598</b>	<b>-4 641</b>	<b>-4 683</b>	<b>-4 810</b>	<b>-4 821</b>
TREND ESTIMATES (d)												
<b>BALANCE</b>												
<b>On goods and services</b>	<b>445</b>	<b>-48</b>	<b>-546</b>	<b>-945</b>	<b>-1 196</b>	<b>-1 322</b>	<b>-1 409</b>	<b>-1 497</b>	<b>-1 572</b>	<b>-1 645</b>	<b>-1 724</b>	<b>-1 782</b>
<b>CREDITS</b>												
Total goods and services	21 524	20 738	20 104	19 681	19 515	19 541	19 644	19 759	19 909	20 072	20 230	20 337
<b>Total goods</b>	<b>17 127</b>	<b>16 348</b>	<b>15 709</b>	<b>15 274</b>	<b>15 097</b>	<b>15 113</b>	<b>15 205</b>	<b>15 303</b>	<b>15 428</b>	<b>15 561</b>	<b>15 684</b>	<b>15 761</b>
Rural goods(b)	2 469	2 391	2 288	2 179	2 084	2 019	1 992	1 997	2 027	2 068	2 107	2 146
Non-rural goods(b)	13 132	12 646	12 297	12 073	11 983	11 998	12 064	12 143	12 246	12 356	12 455	12 521
Net exports of goods under merchandise	33	33	33	33	32	29	25	21	19	19	20	21
Non-monetary gold	1 493	1 278	1 091	990	998	1 066	1 124	1 142	1 136	1 118	1 102	1 073
<b>Total services</b>	<b>4 397</b>	<b>4 390</b>	<b>4 395</b>	<b>4 407</b>	<b>4 419</b>	<b>4 428</b>	<b>4 439</b>	<b>4 456</b>	<b>4 480</b>	<b>4 511</b>	<b>4 546</b>	<b>4 576</b>
<b>DEBITS</b>												
Total goods and services	-21 079	-20 786	-20 650	-20 627	-20 711	-20 863	-21 053	-21 256	-21 480	-21 717	-21 954	-22 119
<b>Total goods</b>	<b>-16 650</b>	<b>-16 401</b>	<b>-16 286</b>	<b>-16 261</b>	<b>-16 321</b>	<b>-16 425</b>	<b>-16 549</b>	<b>-16 677</b>	<b>-16 829</b>	<b>-17 002</b>	<b>-17 185</b>	<b>-17 305</b>
Consumption goods	-5 007	-5 052	-5 098	-5 113	-5 084	-5 045	-5 034	-5 044	-5 078	-5 120	-5 165	-5 194
Capital goods	-3 860	-3 763	-3 702	-3 679	-3 693	-3 733	-3 784	-3 836	-3 899	-3 965	-4 025	-4 069
Intermediate and other merchandise goods	-6 930	-6 913	-6 944	-6 988	-7 043	-7 100	-7 160	-7 227	-7 310	-7 405	-7 503	-7 563
Non-monetary gold	-854	-673	-542	-482	-501	-547	-571	-569	-543	-513	-492	-479
<b>Total services</b>	<b>-4 429</b>	<b>-4 385</b>	<b>-4 364</b>	<b>-4 365</b>	<b>-4 390</b>	<b>-4 438</b>	<b>-4 504</b>	<b>-4 579</b>	<b>-4 651</b>	<b>-4 715</b>	<b>-4 770</b>	<b>-4 814</b>

(a) For sign conventions, see paragraph 15 of the Explanatory Notes.

(b) For all time periods, estimates for sugar, sugar preparations and honey are included in Non-rural goods.

(c) This component is not seasonally adjusted.

(d) Caution should be used when interpreting recent trend estimates as they may be affected by unusual economic factors. For more details on trend estimates, please see paragraph 19 of the explanatory notes.

## GOODS AND SERVICES (a), Summary—Original

	Apr 2009	May 2009	Jun 2009	Jul 2009	Aug 2009	Sep 2009	Oct 2009	Nov 2009	Dec 2009	Jan 2010	Feb 2010	Mar 2010
	\$m	\$m	\$m	\$m	\$m	\$m	\$m	\$m	\$m	\$m	\$m	\$m
<b>BALANCE</b>												
<b>On goods and services</b>	<b>296</b>	<b>568</b>	<b>-615</b>	<b>-1 772</b>	<b>-257</b>	<b>-2 375</b>	<b>-2 599</b>	<b>-2 689</b>	<b>-1 942</b>	<b>-1 726</b>	<b>-459</b>	<b>-1 807</b>
<b>CREDITS</b>												
Total goods and services	20 739	19 979	19 648	19 759	19 765	20 327	20 432	19 041	20 882	18 895	19 272	21 105
<b>Total goods</b>	<b>16 244</b>	<b>15 684</b>	<b>15 588</b>	<b>15 349</b>	<b>15 253</b>	<b>15 989</b>	<b>15 817</b>	<b>14 614</b>	<b>16 514</b>	<b>14 525</b>	<b>14 590</b>	<b>16 289</b>
Rural goods(b)	2 492	2 487	2 223	2 129	2 085	1 985	1 890	1 900	2 203	1 854	2 076	2 382
Non-rural goods(b)	12 402	12 194	12 199	12 346	12 293	12 585	12 757	11 574	13 220	11 408	11 597	12 682
Net exports of goods under merchanting	25	25	25	39	39	41	15	15	15	23	23	23
Non-monetary gold	1 325	978	1 141	835	836	1 378	1 155	1 125	1 076	1 240	894	1 202
<b>Total services</b>	<b>4 495</b>	<b>4 295</b>	<b>4 060</b>	<b>4 410</b>	<b>4 512</b>	<b>4 338</b>	<b>4 615</b>	<b>4 427</b>	<b>4 368</b>	<b>4 370</b>	<b>4 682</b>	<b>4 816</b>
<b>DEBITS</b>												
Total goods and services	-20 443	-19 411	-20 263	-21 531	-20 022	-22 702	-23 031	-21 730	-22 824	-20 621	-19 731	-22 912
<b>Total goods</b>	<b>-16 055</b>	<b>-15 278</b>	<b>-15 805</b>	<b>-16 997</b>	<b>-15 755</b>	<b>-18 023</b>	<b>-18 133</b>	<b>-17 274</b>	<b>-17 918</b>	<b>-15 653</b>	<b>-15 553</b>	<b>-18 357</b>
Consumption goods	-4 730	-4 542	-4 927	-5 410	-4 919	-5 568	-5 783	-5 599	-5 072	-4 598	-4 867	-5 195
Capital goods	-3 617	-3 448	-3 759	-3 851	-3 739	-4 183	-4 264	-4 177	-4 268	-3 604	-3 471	-4 304
Intermediate and other merchandise goods	-7 124	-6 404	-6 773	-7 481	-6 542	-7 535	-7 414	-7 057	-7 913	-7 100	-6 748	-8 263
Non-monetary gold	-584	-884	-346	-255	-555	-737	-672	-441	-665	-351	-467	-595
<b>Total services</b>	<b>-4 388</b>	<b>-4 133</b>	<b>-4 458</b>	<b>-4 534</b>	<b>-4 267</b>	<b>-4 679</b>	<b>-4 898</b>	<b>-4 456</b>	<b>-4 906</b>	<b>-4 968</b>	<b>-4 178</b>	<b>-4 555</b>

(a) For sign conventions, see paragraph 15 of the Explanatory Notes.

(b) For all time periods, estimates for sugar, sugar preparations and honey are included in Non-rural goods.

							9 MONTHS ENDED MARCH		Change %
	2006-07	2007-08	2008-09	Jan 2010	Feb 2010	Mar 2010	2009	2010	
	\$m	\$m	\$m	\$m	\$m	\$m	\$m	\$m	
<b>Total goods credits</b>	<b>169 524</b>	<b>182 952</b>	<b>231 470</b>	<b>14 525</b>	<b>14 590</b>	<b>16 289</b>	<b>183 954</b>	<b>138 940</b>	<b>-24.5</b>
General merchandise	158 570	170 471	213 661	13 262	13 673	15 064	169 664	128 966	-24.0
<i>Rural goods(a)</i>	25 090	25 494	29 383	1 854	2 076	2 382	22 181	18 504	-16.6
Meat and meat preparations	7 080	6 542	7 454	323	442	557	5 730	4 534	-20.9
Cereal grains and cereal preparations	4 171	4 975	6 881	487	468	562	4 992	3 881	-22.3
Wool and sheepskins	3 065	2 796	2 322	139	221	273	1 797	1 665	-7.3
Other rural(a)	10 774	11 181	12 726	905	945	990	9 662	8 424	-12.8
<i>Non-rural goods(a)</i>	133 480	144 977	184 278	11 408	11 597	12 682	147 483	110 462	-25.1
Metal ores and minerals	35 315	41 339	51 921	3 610	3 751	4 083	40 985	33 876	-17.3
Coal, coke and briquettes	21 928	24 599	54 957	2 881	2 367	2 243	45 201	24 628	-45.5
Other mineral fuels	15 641	18 889	20 707	1 403	1 475	1 739	17 072	13 445	-21.2
Metals (excl. non-monetary gold)	14 821	14 039	12 394	809	764	904	9 761	7 620	-21.9
Machinery	8 391	8 750	8 900	475	629	699	6 898	5 915	-14.3
Transport equipment	4 651	5 723	5 090	187	354	392	4 368	3 072	-29.7
Other manufactures	16 241	16 965	17 601	1 033	1 248	1 497	13 471	12 265	-9.0
Other non-rural (incl. sugar and beverages)	15 113	13 126	11 077	888	894	1 007	8 390	8 620	2.7
Goods procured in ports by carriers	1 379	1 547	1 631	122	115	118	1 337	1 021	-23.6
Net exports of goods under merchanting	214	209	301	23	23	23	226	233	3.1
Goods acquired under merchanting (negative exports)	-1 303	-1 528	-2 386	-151	-151	-150	-1 945	-1 366	29.8
Goods sold under merchanting	1 517	1 737	2 687	174	174	173	2 171	1 599	-26.3
Non-monetary gold	10 740	12 272	17 508	1 240	894	1 202	14 064	9 741	-30.7

(a) For all time periods, estimates for sugar, sugar preparations and honey are included in Other non-rural.

## GOODS DEBITS(a), Original

							9 MONTHS ENDED MARCH		Change
	2006-07	2007-08	2008-09	Jan 2010	Feb 2010	Mar 2010	2009	2010	
	\$m	\$m	\$m	\$m	\$m	\$m	\$m	\$m	
<b>Total goods debits</b>	<b>-183 572</b>	<b>-204 846</b>	<b>-222 378</b>	<b>-15 653</b>	<b>-15 553</b>	<b>-18 357</b>	<b>-175 240</b>	<b>-153 663</b>	<b>12.3</b>
General merchandise	-178 261	-197 253	-210 856	-15 302	-15 086	-17 762	-165 532	-148 925	10.0
Consumption goods	-54 913	-59 371	-61 419	-4 598	-4 867	-5 195	-47 220	-47 011	0.4
Food and beverages, mainly for consumption	-7 182	-7 840	-8 857	-671	-610	-706	-6 849	-6 719	1.9
Household electrical items	-4 525	-5 051	-5 488	-334	-351	-320	-4 062	-4 215	-3.8
Non-industrial transport equipment	-14 894	-16 872	-13 247	-1 164	-1 327	-1 639	-10 370	-11 836	-14.1
Textiles, clothing and footwear	-6 805	-7 051	-8 287	-746	-744	-622	-6 539	-5 791	11.4
Toys, books and leisure goods	-4 328	-4 561	-5 277	-261	-300	-321	-4 011	-3 574	10.9
Consumption goods n.e.s.	-17 179	-17 996	-20 263	-1 422	-1 535	-1 587	-15 389	-14 876	3.3
Capital goods	-41 774	-45 299	-51 457	-3 604	-3 471	-4 304	-40 633	-35 861	11.7
Machinery and industrial equipment	-15 330	-16 480	-18 488	-1 104	-1 172	-1 326	-14 682	-11 642	20.7
ADP equipment	-7 008	-7 074	-7 257	-561	-541	-677	-5 475	-5 381	1.7
Telecommunications equipment	-5 315	-5 790	-6 431	-370	-353	-539	-4 881	-4 491	8.0
Civil aircraft(b)	-1 667	-2 691	na	na	na	na	na	na	na
Industrial transport equipment n.e.s.	-6 463	-7 502	-6 527	-476	-553	-728	-5 579	-4 842	13.2
Capital goods n.e.s.(b)	-5 991	-5 762	-11 230	-1 093	-852	-1 034	-8 492	-9 505	-11.9
Intermediate and other merchandise goods	-81 574	-92 583	-97 980	-7 100	-6 748	-8 263	-77 679	-66 053	15.0
Food and beverages, mainly for industry	-819	-923	-1 186	-68	-73	-103	-922	-782	15.2
Primary industrial supplies n.e.s.	-1 552	-1 477	-1 901	-88	-96	-134	-1 614	-1 013	37.2
Fuels and lubricants	-21 470	-29 772	-28 213	-1 927	-2 051	-2 314	-22 639	-19 504	13.8
Parts for transport equipment	-8 355	-8 837	-8 599	-685	-655	-739	-6 812	-6 146	9.8
Parts for ADP equipment	-1 620	-1 115	-1 067	-87	-78	-86	-815	-710	12.9
Other parts for capital goods	-11 780	-11 990	-14 312	-1 116	-945	-1 280	-10 717	-10 473	2.3
Organic and inorganic chemicals	-4 406	-4 673	-5 384	-378	-348	-407	-4 244	-3 262	23.1
Paper and paperboard	-2 368	-2 359	-2 403	-189	-180	-200	-1 944	-1 736	10.7
Textile yarn and fabrics	-1 366	-1 334	-1 344	-92	-91	-93	-1 059	-899	15.1
Iron and steel	-3 817	-3 721	-5 528	-244	-281	-305	-4 701	-2 361	49.8
Plastics	-2 957	-3 064	-3 028	-210	-206	-240	-2 424	-2 023	16.5
Processed industrial supplies n.e.s.	-17 997	-20 132	-21 919	-1 683	-1 540	-1 876	-17 314	-14 914	13.9
Other merchandise goods(b)	-1 619	-1 415	-1 516	-195	-66	-348	-1 135	-1 150	-1.3
Goods procured in ports by carriers	-1 448	-1 771	-1 580	-138	-138	-138	-1 339	-1 080	19.3
Non-monetary gold	-5 311	-7 593	-11 522	-351	-467	-595	-9 708	-4 738	51.2

na not available

(a) For sign conventions, see paragraph 15 of the Explanatory Notes.

(b) From December 2008, the Civil aircraft series and commodities subject to a 'no commodity details' or 'no value details' restriction are included in Capital goods n.e.s.. From September to November 2008 commodities with these restrictions are included in Civil aircraft and for earlier periods are included in Other merchandise goods.

## GOODS CREDITS, Seasonally Adjusted

	Jun 2009	Jul 2009	Aug 2009	Sep 2009	Oct 2009	Nov 2009	Dec 2009	Jan 2010	Feb 2010	Mar 2010
	\$m	\$m	\$m	\$m	\$m	\$m	\$m	\$m	\$m	\$m
<b>Total goods credits</b>	<b>15 778</b>	<b>15 309</b>	<b>14 925</b>	<b>15 727</b>	<b>15 062</b>	<b>14 774</b>	<b>15 608</b>	<b>15 911</b>	<b>15 551</b>	<b>15 819</b>
General merchandise	14 612	14 435	14 050	14 308	13 892	13 634	14 517	14 648	14 634	14 594
<i>Rural goods</i>	2 297	2 213	2 120	2 017	1 860	1 965	2 084	2 093	2 114	2 160
Meat and meat preparations	555	552	551	501	497	475	497	496	478	510
Cereal grains and cereal preparations	616	516	492	432	385	406	400	458	410	466
Wool and sheepskins	162	160	161	162	181	209	188	194	203	211
Other rural (a)	964	985	917	922	797	875	999	944	1 023	974
<i>Non-rural goods</i>	12 315	12 222	11 930	12 292	12 032	11 669	12 433	12 555	12 520	12 434
Metal ores and minerals	3 629	3 653	3 653	3 735	3 489	3 707	3 675	3 932	3 966	3 996
Coal, coke and briquettes(b)	3 136	3 025	2 767	3 027	2 675	2 565	2 949	2 829	2 573	2 202
Other mineral fuels(c)	1 346	1 344	1 323	1 256	1 484	1 358	1 513	1 456	1 607	1 839
Metals (excl. non-monetary gold)(c)	864	820	859	841	910	730	918	888	864	888
Machinery	689	672	645	670	651	644	641	646	661	661
Transport equipment	270	303	346	325	324	342	311	338	381	387
Other manufactures	1 400	1 391	1 361	1 349	1 356	1 334	1 346	1 342	1 347	1 380
Other non-rural (incl. sugar and beverages)	882	905	875	979	1 037	880	963	1 005	1 002	964
Goods procured in ports by carriers(c)	99	108	101	110	105	109	117	119	118	118
Net exports of goods under merchanting(d)	25	39	39	41	15	15	15	23	23	23
Non-monetary gold(d)	1 141	835	836	1 378	1 155	1 125	1 076	1 240	894	1 202

(a) For all time periods, estimates for sugar, sugar preparations and honey are included in Other non-rural.

(b) Only a length-of-month adjustment has been applied to this component.

(c) In using these seasonally adjusted series, care should be exercised because of the difficulties associated with reliably estimating the seasonal pattern.

(d) This component is not seasonally adjusted.

## GOODS DEBITS(a), Seasonally Adjusted

	Jun 2009	Jul 2009	Aug 2009	Sep 2009	Oct 2009	Nov 2009	Dec 2009	Jan 2010	Feb 2010	Mar 2010
	\$m	\$m	\$m	\$m	\$m	\$m	\$m	\$m	\$m	\$m
<b>Total goods debits</b>	<b>-16 147</b>	<b>-16 745</b>	<b>-16 089</b>	<b>-17 141</b>	<b>-16 817</b>	<b>-16 223</b>	<b>-17 413</b>	<b>-16 682</b>	<b>-17 026</b>	<b>-17 702</b>
General merchandise	-15 801	-16 490	-15 534	-16 404	-16 145	-15 782	-16 748	-16 331	-16 559	-17 107
Consumption goods	-5 181	-5 234	-4 923	-5 092	-5 024	-5 055	-4 969	-5 090	-5 353	-5 143
Food and beverages, mainly for consumption	-755	-780	-759	-733	-731	-683	-715	-707	-694	-714
Household electrical items	-536	-515	-502	-475	-415	-468	-462	-430	-430	-398
Non-industrial transport equipment	-1 088	-1 116	-1 030	-1 235	-1 274	-1 333	-1 330	-1 344	-1 550	-1 468
Textiles, clothing and footwear	-664	-674	-627	-622	-592	-578	-502	-641	-640	-636
Toys, books and leisure goods	-436	-431	-419	-392	-399	-385	-360	-354	-377	-362
Consumption goods n.e.s.	-1 702	-1 718	-1 586	-1 635	-1 612	-1 607	-1 599	-1 614	-1 661	-1 564
Capital goods	-3 675	-3 836	-3 925	-3 999	-4 059	-3 758	-4 010	-3 964	-4 021	-4 085
Machinery and industrial equipment	-1 356	-1 338	-1 269	-1 296	-1 203	-1 354	-1 216	-1 133	-1 371	-1 246
ADP equipment	-568	-667	-604	-553	-593	-564	-590	-639	-657	-638
Telecommunications equipment	-513	-512	-506	-523	-491	-492	-503	-494	-432	-498
Civil aircraft(b)(c)	na	na	na	na	na	na	na	na	na	na
Industrial transport equipment n.e.s.	-353	-426	-413	-518	-501	-542	-554	-520	-623	-661
Capital goods n.e.s.(b)	-886	-893	-1 133	-1 109	-1 270	-806	-1 148	-1 179	-938	-1 042
Intermediate and other merchandise goods	-6 946	-7 420	-6 686	-7 314	-7 063	-6 969	-7 769	-7 277	-7 186	-7 880
Food and beverages, mainly for industry	-89	-93	-98	-78	-81	-81	-88	-66	-84	-100
Primary industrial supplies n.e.s.(d)	-124	-83	-120	-105	-80	-114	-123	-101	-119	-123
Fuels and lubricants(c)	-2 021	-2 426	-1 794	-2 241	-2 025	-2 093	-2 633	-1 927	-2 051	-2 314
Parts for transport equipment	-601	-589	-622	-771	-683	-619	-674	-737	-705	-697
Parts for ADP equipment	-80	-95	-75	-60	-78	-76	-80	-90	-91	-76
Other parts for capital goods	-1 178	-1 160	-1 131	-1 150	-1 170	-1 108	-1 238	-1 199	-1 094	-1 208
Organic and inorganic chemicals	-396	-365	-356	-333	-371	-382	-369	-351	-338	-376
Paper and paperboard	-168	-172	-175	-186	-184	-186	-194	-196	-195	-190
Textile yarn and fabrics	-93	-101	-107	-102	-101	-94	-92	-96	-100	-92
Iron and steel	-269	-284	-264	-249	-203	-225	-254	-251	-293	-293
Plastics	-211	-233	-216	-210	-218	-212	-217	-218	-231	-237
Processed industrial supplies n.e.s.	-1 561	-1 630	-1 553	-1 596	-1 622	-1 601	-1 622	-1 712	-1 680	-1 687
Other merchandise goods(b)(e)	-73	-75	-62	-115	-139	-69	-81	-195	-66	-348
Goods procured in ports by carriers(c)	-81	-114	-114	-117	-108	-108	-105	-138	-138	-138
Non-monetary gold(c)	-346	-255	-555	-737	-672	-441	-665	-351	-467	-595

na not available

(a) For sign conventions, see paragraph 15 of the Explanatory Notes.

(b) From December 2008, the Civil aircraft series and commodities subject to a 'no commodity details' or 'no value details' restriction are included in Capital goods n.e.s.. From September to November 2008 commodities with these restrictions are included in Civil aircraft and for earlier periods are included in Other merchandise goods.

(c) This component is not seasonally adjusted.

(d) In using these seasonally adjusted series, care should be exercised because of the difficulties associated with reliably estimating the seasonal pattern.

(e) From July 1981, this component is not seasonally adjusted.

## GOODS CREDITS(a), Trend Estimates

	Jun 2009	Jul 2009	Aug 2009	Sep 2009	Oct 2009	Nov 2009	Dec 2009	Jan 2010	Feb 2010	Mar 2010
	\$m	\$m	\$m	\$m	\$m	\$m	\$m	\$m	\$m	\$m
<b>Total goods credits</b>	<b>15 709</b>	<b>15 274</b>	<b>15 097</b>	<b>15 113</b>	<b>15 205</b>	<b>15 303</b>	<b>15 428</b>	<b>15 561</b>	<b>15 684</b>	<b>15 761</b>
General merchandise	14 585	14 251	14 067	14 017	14 056	14 140	14 273	14 423	14 562	14 668
<i>Rural goods</i>	2 288	2 179	2 084	2 019	1 992	1 997	2 027	2 068	2 107	2 146
Meat and meat preparations	564	545	529	514	501	493	489	489	491	495
Cereal grains and cereal preparations	571	524	478	442	420	410	414	422	431	443
Wool and sheepskins	162	162	165	171	180	188	194	200	204	207
Other rural(b)	990	948	913	892	891	906	930	957	981	1 001
<i>Non-rural goods</i>	12 297	12 073	11 983	11 998	12 064	12 143	12 246	12 356	12 455	12 521
Metal ores and minerals	3 710	3 631	3 603	3 611	3 645	3 696	3 763	3 840	3 916	3 981
Coal, coke and briquettes	3 102	2 953	2 857	2 820	2 804	2 773	2 724	2 656	2 574	2 477
Other mineral fuels	1 301	1 302	1 321	1 343	1 374	1 418	1 479	1 549	1 622	1 693
Metals (excl. non-monetary gold)	844	844	844	845	847	853	861	869	877	884
Machinery	675	665	659	655	651	649	649	650	653	655
Transport equipment	274	290	308	322	330	333	339	349	360	373
Other manufactures	1 388	1 376	1 366	1 357	1 349	1 344	1 345	1 348	1 353	1 359
Other non-rural (incl. sugar and beverages)	903	909	921	938	955	966	973	977	982	980
Goods procured in ports by carriers	103	102	103	106	109	112	114	117	119	120
Net exports of goods under merchanting	33	33	32	29	25	21	19	19	20	21
Non-monetary gold	1 091	990	998	1 066	1 124	1 142	1 136	1 118	1 102	1 073

(a) Caution should be used when interpreting recent trend estimates as they may be affected by unusual economic factors. For more details on trend estimates, please see paragraph 19 of the explanatory notes.

(b) For all time periods, estimates for sugar, sugar preparations and honey are included in Other non-rural.



	Jun 2009	Jul 2009	Aug 2009	Sep 2009	Oct 2009	Nov 2009	Dec 2009	Jan 2010	Feb 2010	Mar 2010
	\$m	\$m	\$m	\$m	\$m	\$m	\$m	\$m	\$m	\$m
<b>Total goods debits</b>	<b>-16 286</b>	<b>-16 261</b>	<b>-16 321</b>	<b>-16 425</b>	<b>-16 549</b>	<b>-16 677</b>	<b>-16 829</b>	<b>-17 002</b>	<b>-17 185</b>	<b>-17 305</b>
General merchandise	-15 744	-15 780	-15 820	-15 878	-15 978	-16 107	-16 287	-16 490	-16 693	-16 826
Consumption goods	-5 098	-5 113	-5 084	-5 045	-5 034	-5 044	-5 078	-5 120	-5 165	-5 194
Food and beverages, mainly for consumption	-755	-755	-749	-738	-726	-713	-706	-703	-702	-702
Household electrical items	-516	-512	-498	-479	-462	-451	-442	-434	-425	-418
Non-industrial transport equipment	-1 003	-1 076	-1 139	-1 196	-1 252	-1 306	-1 359	-1 409	-1 453	-1 481
Textiles, clothing and footwear	-674	-657	-632	-606	-591	-583	-586	-597	-611	-626
Toys, books and leisure goods	-442	-432	-418	-402	-390	-380	-372	-367	-363	-361
Consumption goods n.e.s.	-1 707	-1 680	-1 648	-1 624	-1 613	-1 610	-1 611	-1 611	-1 611	-1 606
Capital goods	-3 702	-3 679	-3 693	-3 733	-3 784	-3 836	-3 899	-3 965	-4 025	-4 069
Machinery and industrial equipment	-1 339	-1 303	-1 281	-1 270	-1 264	-1 253	-1 249	-1 250	-1 254	-1 258
ADP equipment	-583	-590	-590	-588	-588	-591	-602	-618	-634	-649
Telecommunications equipment	-522	-511	-508	-506	-502	-496	-489	-482	-477	-472
Civil aircraft(c)	na	na	na	na	na	na	na	na	na	na
Industrial transport equipment n.e.s.	-360	-394	-436	-475	-506	-529	-552	-576	-602	-621
Capital goods n.e.s.(c)	np	np	np	np	np	np	np	np	np	np
Intermediate and other merchandise goods	-6 944	-6 988	-7 043	-7 100	-7 160	-7 227	-7 310	-7 405	-7 503	-7 563
Food and beverages, mainly for industry	-91	-90	-88	-85	-83	-81	-80	-82	-84	-88
Primary industrial supplies n.e.s.	-102	-102	-103	-102	-104	-106	-110	-113	-116	-120
Fuels and lubricants	-1 970	-2 042	-2 102	-2 142	-2 160	-2 169	-2 181	-2 191	-2 201	-2 186
Parts for transport equipment	-616	-629	-645	-663	-677	-686	-690	-695	-700	-700
Parts for ADP equipment	-81	-78	-76	-75	-75	-78	-81	-84	-86	-87
Other parts for capital goods	-1 174	-1 159	-1 150	-1 150	-1 156	-1 163	-1 169	-1 173	-1 175	-1 176
Organic and inorganic chemicals	-366	-364	-363	-361	-361	-362	-362	-361	-360	-360
Paper and paperboard	-171	-172	-176	-180	-185	-189	-191	-193	-194	-194
Textile yarn and fabrics	-101	-101	-101	-100	-99	-98	-96	-95	-95	-94
Iron and steel	-276	-263	-250	-239	-234	-237	-246	-259	-273	-286
Plastics	-217	-216	-215	-215	-215	-216	-219	-223	-227	-231
Processed industrial supplies n.e.s.	-1 587	-1 582	-1 582	-1 591	-1 606	-1 624	-1 644	-1 664	-1 682	-1 694
Other merchandise goods(c)	-99	-90	-87	-86	-92	-104	-122	-148	-179	-209
Goods procured in ports by carriers	-93	-100	-106	-110	-113	-115	-119	-125	-132	-137
Non-monetary gold	-542	-482	-501	-547	-571	-569	-543	-513	-492	-479

na not available

np not available for publication but included in totals where applicable, unless otherwise indicated

(a) For sign conventions, see paragraph 15 of the Explanatory Notes.

(b) Caution should be used when interpreting recent trend estimates as they may be affected by unusual economic factors. For more details on trend estimates, please see paragraph 19 of the explanatory notes.

(c) From December 2008, the Civil aircraft series and commodities subject to a 'no commodity details' or 'no value details' restriction are included in Capital goods n.e.s.. From September to November 2008 commodities with these restrictions are included in Civil aircraft and for earlier periods are included in Other merchandise goods. Trend estimates for the Capital goods n.e.s. series from December 2008 have been suppressed due to the change in the composition of the series.

							9 MONTHS ENDED MARCH		Change %
	2006-07	2007-08	2008-09	Jan 2010	Feb 2010	Mar 2010	2009	2010	
	\$m	\$m	\$m	\$m	\$m	\$m	\$m	\$m	
<b>Services credits</b>	<b>45 956</b>	<b>50 645</b>	<b>52 873</b>	<b>4 370</b>	<b>4 682</b>	<b>4 816</b>	<b>40 023</b>	<b>40 538</b>	<b>1.3</b>
Manufacturing services on physical inputs owned by others	121	77	258	27	24	24	172	234	36.0
Maintenance and repair services n.i.e.	90	103	86	5	4	4	74	48	-35.1
Transport	8 546	9 129	7 342	579	562	554	5 887	4 951	-15.9
Passenger(c)	4 237	4 118	3 410	265	248	239	2 794	2 062	-26.2
Freight	765	1 463	851	45	45	46	700	456	-34.9
Other	2 348	2 595	2 127	187	187	187	1 639	1 659	1.2
Postal and courier services(d)	1 196	953	954	82	82	82	754	774	2.7
Travel	25 161	28 252	31 096	2 675	3 009	3 146	23 185	25 601	10.4
Other services	12 038	13 084	14 091	1 084	1 083	1 088	10 705	9 704	-9.4
<b>Services debits</b>	<b>-45 139</b>	<b>-53 330</b>	<b>-56 172</b>	<b>-4 968</b>	<b>-4 178</b>	<b>-4 555</b>	<b>-43 193</b>	<b>-41 441</b>	<b>4.1</b>
Manufacturing services on physical inputs owned by others	-3	-7	-4	-1	-1	—	-4	-6	-50.0
Maintenance and repair services n.i.e.	-131	-97	-193	-15	-53	-20	-146	-213	-45.9
Transport	-15 732	-16 797	-15 832	-1 067	-1 069	-1 264	-12 721	-10 312	18.9
Passenger(c)	-6 876	-7 278	-5 835	-428	-401	-481	-4 603	-3 945	14.3
Freight	-8 303	-8 923	-9 386	-602	-631	-746	-7 654	-5 989	21.8
Other	-385	-417	-437	-25	-25	-25	-333	-237	28.8
Postal and courier services(d)	-168	-179	-174	-12	-12	-12	-131	-141	-7.6
Travel	-15 934	-20 153	-22 082	-2 427	-1 577	-1 803	-16 741	-18 239	-8.9
Other services	-13 339	-16 276	-18 061	-1 458	-1 478	-1 468	-13 581	-12 671	6.7
<b>Memorandum items:</b>									
Tourism related service credits(e)	29 398	32 370	34 506	2 940	3 257	3 385	25 979	27 663	6.5
Tourism related service debits(e)	-22 810	-27 431	-27 917	-2 855	-1 978	-2 284	-21 344	-22 184	-3.9

— nil or rounded to zero (including null cells)

(a) For sign conventions, see paragraph 15 of the Explanatory Notes.

(b) For more detailed trade in services components, see table 11.

(c) Passenger services includes agency fees and commissions for air transport.

(d) Postal and courier services includes indirect commissions for sea transport.

(e) For a more detailed explanation of tourism related services, see paragraph 27 of the Explanatory Notes.

	Jun 2009	Jul 2009	Aug 2009	Sep 2009	Oct 2009	Nov 2009	Dec 2009	Jan 2010	Feb 2010	Mar 2010
	\$m	\$m	\$m	\$m	\$m	\$m	\$m	\$m	\$m	\$m
SEASONALLY ADJUSTED										
<b>Services credits</b>	<b>4 395</b>	<b>4 374</b>	<b>4 402</b>	<b>4 526</b>	<b>4 426</b>	<b>4 414</b>	<b>4 444</b>	<b>4 502</b>	<b>4 585</b>	<b>4 622</b>
Manufacturing services on physical inputs owned by others(b)	27	28	24	20	32	28	27	27	24	24
Maintenance and repair services n.i.e.(b)	3	5	9	7	5	4	5	5	4	4
Transport	516	518	519	531	550	550	551	552	551	543
Passenger(c)	232	217	215	225	224	223	220	220	220	215
Freight(d)	51	54	53	52	50	51	50	49	47	46
Other(d)	164	169	173	172	187	188	191	193	195	194
Postal and courier services(e)	69	77	78	82	88	88	89	90	89	88
Travel	2 739	2 740	2 764	2 874	2 787	2 776	2 805	2 806	2 889	2 924
Other services	1 111	1 084	1 086	1 094	1 052	1 055	1 057	1 112	1 116	1 126
<b>Services debits</b>	<b>-4 431</b>	<b>-4 324</b>	<b>-4 361</b>	<b>-4 378</b>	<b>-4 578</b>	<b>-4 598</b>	<b>-4 641</b>	<b>-4 683</b>	<b>-4 810</b>	<b>-4 821</b>
Manufacturing services on physical inputs owned by others(b)	—	—	-1	—	-1	—	-2	-1	-1	—
Maintenance and repair services n.i.e.(b)	-20	-17	-18	-20	-17	-21	-32	-15	-53	-20
Transport	-1 068	-1 056	-1 034	-1 059	-1 151	-1 141	-1 175	-1 152	-1 188	-1 222
Passenger(c)	-405	-392	-390	-391	-447	-469	-479	-465	-466	-478
Freight	-613	-621	-602	-625	-661	-629	-655	-645	-679	-703
Other(b)	-34	-28	-28	-28	-26	-26	-26	-25	-25	-25
Postal and courier services(e)	-16	-14	-14	-15	-17	-17	-15	-17	-17	-16
Travel	-1 852	-1 904	-1 948	-1 934	-2 020	-2 037	-2 028	-2 049	-2 072	-2 078
Other services	-1 491	-1 347	-1 360	-1 365	-1 389	-1 399	-1 404	-1 466	-1 496	-1 501
<b>Memorandum items:</b>										
Tourism related service credits(f)	2 971	2 957	2 979	3 099	3 011	3 000	3 025	3 026	3 110	3 139
Tourism related service debits(f)	-2 258	-2 296	-2 338	-2 326	-2 467	-2 506	-2 508	-2 514	-2 539	-2 556

## TREND ESTIMATES

<b>Services credits</b>	<b>4 395</b>	<b>4 407</b>	<b>4 419</b>	<b>4 428</b>	<b>4 439</b>	<b>4 456</b>	<b>4 480</b>	<b>4 511</b>	<b>4 546</b>	<b>4 576</b>
Manufacturing services on physical inputs owned by others	27	26	26	26	27	27	27	26	26	25
Maintenance and repair services n.i.e.	5	6	6	6	6	5	5	4	4	4
Transport	516	516	523	532	541	547	550	551	551	550
Passenger(c)	228	222	220	220	221	222	221	220	219	217
Freight	52	52	52	52	51	51	50	49	48	47
Other	165	168	172	177	183	187	190	193	195	196
Postal and courier services(e)	72	75	79	82	86	88	89	89	90	90
Travel	2 747	2 769	2 784	2 792	2 797	2 806	2 819	2 838	2 860	2 880
Other services	1 100	1 090	1 080	1 072	1 068	1 071	1 079	1 092	1 105	1 117
<b>Services debits</b>	<b>-4 364</b>	<b>-4 365</b>	<b>-4 390</b>	<b>-4 438</b>	<b>-4 504</b>	<b>-4 579</b>	<b>-4 651</b>	<b>-4 715</b>	<b>-4 770</b>	<b>-4 814</b>
Manufacturing services on physical inputs owned by others	—	—	—	-1	-1	-1	-1	-1	-1	-1
Maintenance and repair services n.i.e.	-17	-18	-18	-19	-20	-23	-26	-29	-31	-32
Transport	-1 053	-1 049	-1 060	-1 082	-1 110	-1 136	-1 159	-1 178	-1 194	-1 205
Passenger(c)	-393	-391	-399	-415	-435	-452	-464	-472	-478	-480
Freight	-614	-614	-618	-624	-633	-643	-653	-663	-674	-684
Other	-32	-30	-29	-27	-26	-26	-26	-25	-25	-25
Postal and courier services(e)	-15	-15	-15	-15	-16	-16	-16	-17	-17	-17
Travel	-1 865	-1 898	-1 933	-1 967	-1 995	-2 019	-2 038	-2 055	-2 068	-2 079
Other services	-1 429	-1 400	-1 378	-1 370	-1 378	-1 400	-1 427	-1 453	-1 477	-1 497
<b>Memorandum items:</b>										
Tourism related service credits(f)	2 974	2 991	3 004	3 012	3 019	3 028	3 040	3 058	3 079	3 097
Tourism related service debits(f)	-2 258	-2 289	-2 332	-2 382	-2 430	-2 471	-2 503	-2 527	-2 546	-2 559

— nil or rounded to zero (including null cells)

(a) For sign conventions, see paragraph 15 of the Explanatory Notes.

(b) This component is not seasonally adjusted.

(c) Passenger services includes agency fees and commissions for air transport.

(d) In using these seasonally adjusted series, care should be exercised because of the difficulties associated with reliably estimating the seasonal pattern.

(e) Postal and courier services includes indirect commissions for sea transport.

(f) For a more detailed explanation of tourism related services, see paragraph 27 of the Explanatory Notes.

	CREDITS				DEBITS			
	Jun Qtr	Sep Qtr	Dec Qtr	Mar Qtr	Jun Qtr	Sep Qtr	Dec Qtr	Mar Qtr
	2009	2009	2009	2010	2009	2009	2009	2010
	\$m	\$m	\$m	\$m	\$m	\$m	\$m	\$m
<b>Services</b>	<b>12 850</b>	<b>13 260</b>	<b>13 410</b>	<b>13 868</b>	<b>-12 979</b>	<b>-13 480</b>	<b>-14 260</b>	<b>-13 701</b>
Manufacturing services on physical inputs owned by others	86	72	87	75	—	-1	-3	-2
Maintenance and repair services n.i.e.	12	21	14	13	-47	-55	-70	-88
Transport	1 455	1 578	1 678	1 695	-3 111	-3 207	-3 705	-3 400
Passenger(b)	616	611	699	752	-1 232	-1 212	-1 423	-1 310
Freight	151	164	156	136	-1 732	-1 844	-2 166	-1 979
Other	488	521	577	561	-104	-84	-78	-75
Postal and courier services(c)	200	282	246	246	-43	-67	-38	-36
Travel	7 911	8 434	8 337	8 830	-5 341	-6 220	-6 212	-5 807
Business	644	693	663	792	-717	-768	-768	-847
Personal	7 267	7 741	7 674	8 038	-4 624	-5 452	-5 444	-4 960
Education-related	4 518	4 972	4 278	4 642	-168	-263	-215	-218
Other(d)	2 749	2 769	3 396	3 396	-4 456	-5 189	-5 229	-4 742
Construction	12	47	27	24	—	—	—	—
Insurance and pension services	58	76	75	61	-137	-123	-134	-126
Financial services	302	314	289	390	-181	-155	-183	-216
Charges for the use of intellectual property n.i.e.	273	213	252	266	-906	-891	-924	-907
Telecommunications, computer and information services	513	461	430	390	-560	-511	-510	-512
Telecommunication services	63	62	70	74	-139	-122	-126	-160
Computer and information services	450	399	360	316	-421	-389	-384	-352
Computer services	362	315	297	257	-358	-327	-316	-277
Information services	12	8	8	6	-10	-5	-9	-6
Other services	76	76	55	53	-53	-57	-59	-69
Other business services	1 815	1 640	1 829	1 702	-2 142	-1 799	-1 979	-1 832
Research and development services	146	130	158	125	-60	-55	-67	-58
Professional and management consulting services	880	773	828	746	-977	-710	-860	-824
Legal, accounting, management consulting, public relations and other professional services	789	685	733	656	-930	-682	-821	-784
Advertising, market research and public opinion polling	91	88	95	90	-47	-28	-39	-40
Technical, trade-related and other business services	789	737	843	831	-1 105	-1 034	-1 052	-950
Architectural, engineering and other technical services	340	383	407	402	-431	-379	-447	-369
Waste treatment and de-pollution, agricultural and mining services	59	52	54	52	-186	-142	-150	-121
Operational leasing services	63	75	90	92	-187	-196	-196	-192
Trade-related commission services	220	123	174	153	-57	-56	-54	-43
Other business services n.i.e.	107	104	118	132	-244	-261	-205	-225
Personal, cultural and recreational services	196	194	182	206	-314	-296	-318	-589
Audiovisual and related services	24	28	32	68	-287	-266	-281	-435
Other personal, cultural and recreational services	172	166	150	138	-27	-30	-37	-154
Government goods and services n.i.e.	217	210	210	216	-240	-222	-222	-222
<b>Memorandum items:</b>								
Gross insurance premiums receivable / payable	165	171	179	158	-245	-249	-263	-256
Gross insurance claims payable / receivable	-123	-117	-121	-108	275	278	288	284
Tourism related services(e)	8 527	9 045	9 036	9 582	-6 573	-7 432	-7 635	-7 117

— nil or rounded to zero (including null cells)

(a) For sign conventions, see paragraph 15 of the Explanatory Notes.

(b) Passenger services includes agency fees and commissions for air transport.

(c) Postal and courier services includes indirect commissions for sea transport.

(d) Other personal travel includes health-related travel.

(e) For a more detailed explanation of tourism related services, see paragraph 27 of the Explanatory Notes.

	Jan	Feb	Mar	Per cent	9 MONTHS	
	2010	2010	2010	of total	ENDED MARCH	
	\$m	\$m	\$m	merchandise	2009	2010
				exports(b)		
				%	\$m	\$m
MAJOR COMMODITIES (c)						
011 Meat of bovine animals	194	269	363	2.2	3 910	2 898
041 Wheat and meslin	348	306	362	2.2	3 517	2 707
268 Wool and other animal hair	123	197	243	1.5	1 551	1 456
281 Iron ore and concentrates	2 286	2 209	2 427	15.0	27 187	20 954
283 Copper ores and concentrates	235	487	417	2.6	2 608	3 261
285 Aluminium ores and concentrates	450	370	440	2.7	4 984	3 595
321 Coal, not agglomerated	2 879	2 362	2 229	13.7	45 028	24 562
333 Crude petroleum oils	545	554	744	4.6	6 698	5 930
334 Refined petroleum oils	176	214	185	1.1	2 208	1 794
343 Natural gas	714	739	787	4.9	8 488	5 793
682 Copper	141	137	178	1.1	2 161	1 785
684 Aluminium	365	273	338	2.1	4 261	2 935
781 Motor vehicles for transport of people	59	171	188	1.2	2 435	1 337
971 Gold, non-monetary	1 215	871	1 168	7.2	13 572	9 419

## SECTION AND DIVISION OF THE SITC

0	Food and live animals					
00	Live animals (excl. fish, crustaceans, molluscs and aquatic invertebrates)	88	90	106	0.7	892 910
01	Meat and meat preparations	323	442	557	3.4	5 728 4 535
02	Dairy products and birds' eggs	149	153	182	1.1	2 032 1 445
03	Fish (not marine mammals), crustaceans, molluscs and aquatic invertebrates, and preparations thereof	106	99	84	0.5	894 763
04	Cereals and cereal preparations	487	468	562	3.5	4 992 3 881
05	Vegetables and fruit	125	123	134	0.8	1 141 1 125
06	Sugars, sugar preparations and honey	21	27	28	0.2	202 224
07	Coffee, tea, cocoa, spices, and manufactures thereof	16	23	21	0.1	221 218
08	Feeding stuff for animals (excl. unmilled cereals)	56	65	77	0.5	1 039 739
09	Miscellaneous edible products and preparations	54	63	79	0.5	498 534
	<i>Total Food and live animals</i>	<i>1 424</i>	<i>1 553</i>	<i>1 830</i>	<i>11.3</i>	<i>17 639 14 373</i>
1	Beverages and tobacco					
11	Beverages	138	177	208	1.3	2 007 1 770
12	Tobacco and tobacco manufactures	7	7	13	0.1	101 95
	<i>Total Beverages and tobacco</i>	<i>145</i>	<i>184</i>	<i>221</i>	<i>1.4</i>	<i>2 107 1 865</i>
2	Crude materials, inedible, except fuels					
21	Hides, skins and furskins, raw	30	46	60	0.4	517 408
22	Oil-seeds and oleaginous fruits	123	86	55	0.3	489 488
23	Crude rubber (incl. synthetic and reclaimed)	1	1	2	—	10 10
24	Cork and wood	77	92	90	0.6	947 831
25	Pulp and waste paper	20	19	24	0.1	204 171
26	Textile fibres and their wastes (not manufactured into yarn or fabric)	158	256	279	1.7	1 934 1 921
27	Crude fertilizers (excl. those of Division 56) and crude minerals (excl. coal, petroleum and precious stones)	19	24	34	0.2	283 217
28	Metalliferous ores and metal scrap	3 590	3 727	4 049	25.0	40 925 33 658
29	Crude animal and vegetable materials, n.e.s.	12	15	16	0.1	184 149
	<i>Total Crude materials, inedible, except fuels</i>	<i>4 031</i>	<i>4 266</i>	<i>4 608</i>	<i>28.4</i>	<i>45 492 37 853</i>
3	Mineral fuels, lubricants and related materials					
32	Coal, coke and briquettes	2 881	2 367	2 243	13.8	45 203 24 628
33	Petroleum, petroleum products and related materials	723	770	932	5.7	8 919 7 735
34	Gas, natural and manufactured	796	815	918	5.7	9 334 6 673
	<i>Total Mineral fuels, lubricants and related materials</i>	<i>4 400</i>	<i>3 951</i>	<i>4 093</i>	<i>25.2</i>	<i>63 455 39 036</i>

— nil or rounded to zero (including null cells)

(a) Some SITC sections and divisions exclude commodities subject to a confidentiality restriction. These are included in Division 98. For more information see paragraph 26 of the Explanatory Notes.

(b) Per cent of total merchandise is calculated for the most recent month.

(c) The 'Major commodities' section lists commodities at the SITC Rev 4 3-digit level which are the most significant (by value) or are of particular interest. Abbreviated descriptors have been used. The list of 'Major commodities' is reviewed annually.

	Jan 2010	Feb 2010	Mar 2010	Per cent of total merchandise exports(b)	9 MONTHS ENDED MARCH	
					2009	2010
					\$m	\$m
SECTION AND DIVISION OF THE SITC						
4	Animal and vegetable oils, fats and waxes					
41	12	18	30	0.2	247	186
42	13	12	13	0.1	139	113
43	Fats and oils (processed), waxes and inedible mixtures or preparations, of animal or vegetable origin, n.e.s.					
	1	1	1	—	9	9
	<i>Total Animal and vegetable oils, fats and waxes</i>					
	26	30	43	0.3	394	308
5	Chemicals and related products, n.e.s.					
51	10	15	18	0.1	130	124
52	37	48	44	0.3	436	388
53	40	56	54	0.3	422	497
54	286	256	406	2.5	2 995	3 066
55	Essential oils and resinoids and perfume materials, toilet, polishing and cleansing preparations					
	39	49	61	0.4	463	460
56	17	8	10	0.1	640	270
57	17	26	30	0.2	232	205
58	13	32	31	0.2	295	267
59	75	79	91	0.6	848	736
	<i>Total Chemicals and related products, nes</i>					
	533	569	744	4.6	6 462	6 012
6	Manufactured goods classified chiefly by material					
61	13	22	24	0.1	207	185
62	10	15	17	0.1	196	138
63	10	7	11	0.1	123	103
64	50	60	75	0.5	508	508
65	13	23	27	0.2	276	214
66	47	79	79	0.5	683	588
67	73	104	108	0.7	1 142	724
68	737	660	796	4.9	8 617	6 894
69	53	81	89	0.5	822	791
	<i>Total Manufactured goods classified chiefly by material</i>					
	1 005	1 053	1 226	7.6	12 574	10 147
7	Machinery and transport equipment					
71	48	64	75	0.5	696	588
72	100	126	158	1.0	1 481	1 360
73	8	12	7	—	147	99
74	General industrial machinery and equipment, n.e.s. and machine parts, n.e.s.					
	102	130	155	1.0	1 429	1 269
75	78	89	98	0.6	948	756
76	Telecommunications and sound recording and reproducing apparatus and equipment					
	55	76	72	0.4	862	706
77	Electrical machinery, apparatus and appliances, parts (incl. non electrical counterparts of electrical domestic equip)					
	84	130	134	0.8	1 333	1 129
78	124	245	292	1.8	3 209	2 066
79	64	109	99	0.6	1 155	1 004
	<i>Total Machinery and transport equipment</i>					
	662	982	1 090	6.7	11 260	8 978

— nil or rounded to zero (including null cells)

(b) Per cent of total merchandise is calculated for the most recent month.

(a) Some SITC sections and divisions exclude commodities subject to a confidentiality restriction. These are included in Division 98. For more information see paragraph 26 of the Explanatory Notes.

	Jan 2010	Feb 2010	Mar 2010	Per cent of total merchandise exports(b)	9 MONTHS ENDED MARCH		
					2009	2010	
					\$m	\$m	
SECTION AND DIVISION OF THE SITC							
8	Miscellaneous manufactured articles						
81	Prefabricated buildings and sanitary, plumbing, heating and lighting fixtures and fittings, n.e.s.						
	18	12	13	0.1	109	122	
82	Furniture and parts thereof; bedding, mattresses, mattress supports, cushions and similar stuffed furnishings						
	5	12	12	0.1	101	82	
83	Travel goods, handbags and similar containers						
	2	3	3	—	23	26	
84	Articles of apparel and clothing accessories						
	16	22	26	0.2	187	186	
85	Footwear						
	2	4	3	—	40	32	
87	Professional, scientific and controlling instruments and apparatus, n.e.s.						
	126	161	170	1.0	1 687	1 479	
88	Photographic apparatus, equipment and supplies and optical goods, n.e.s., watches and clocks						
	16	20	24	0.2	285	217	
89	Miscellaneous manufactured articles, n.e.s.						
	117	155	177	1.1	1 748	1 562	
	<i>Total Miscellaneous manufactured articles</i>	<i>302</i>	<i>387</i>	<i>2.6</i>	<i>4 179</i>	<i>3 706</i>	
9	Commodities and transactions not classified elsewhere in the SITC						
93	Special transactions and commodities not classified according to kind						
	143	145	152	0.9	1 267	1 406	
95	Gold coin whether or not legal tender, and other coin being legal tender						
	25	23	34	0.2	494	322	
96	Coin (excl. gold coin) not being legal tender						
	—	—	—	—	—	—	
97	Gold, non-monetary (excl. gold ores and concentrates)						
	1 215	871	1 168	7.2	13 572	9 419	
98	Combined confidential items excl. some of SITC 280 (exports only) and some of SITCs 510 and 520 (imports only)						
	572	515	590	3.6	4 416	5 088	
	<i>Total Commodities and transactions not classified elsewhere in the SITC</i>	<i>1 956</i>	<i>1 555</i>	<i>12.0</i>	<i>19 750</i>	<i>16 235</i>	
	<b>Total merchandise exports</b>	<b>14 482</b>	<b>14 531</b>	<b>100.0</b>	<b>183 314</b>	<b>138 513</b>	
	Balance of Payments Adjustments	43	59	62	..	640	427
	Goods Credits (exports) on a Balance of Payments Basis	14 525	14 590	16 289	..	183 954	138 940

.. not applicable  
 — nil or rounded to zero (including null cells)

(a) Some SITC sections and divisions exclude commodities subject to a confidentiality restriction. These are included in Division 98. For more information see paragraph 26 of the Explanatory Notes.  
 (b) Per cent of total merchandise is calculated for the most recent month.

	Jan	Feb	Mar	Per cent	9 MONTHS	
	2010	2010	2010	of total	ENDED MARCH	
	\$m	\$m	\$m	merchandise	2009	2010
				imports(b)		
				%	\$m	\$m
MAJOR COMMODITIES						
333 Crude petroleum oils	1 184	1 240	1 194	6.6	11 531	10 653
334 Refined petroleum oils	687	780	973	5.4	9 926	7 995
542 Medicaments	558	622	659	3.6	5 390	5 565
641 Paper and paperboard	161	153	173	1.0	1 628	1 430
723 Civil engineering and contractors' plant and equipment	158	210	304	1.7	2 841	1 985
751 Office machines	153	150	154	0.9	1 513	1 447
752 Automatic data processing machines	459	426	567	3.1	4 402	4 291
761 Televisions	178	184	154	0.9	2 145	2 368
764 Telecommunications equipment	421	404	600	3.3	5 565	5 134
781 Motor vehicles for the transport of people	1 038	1 237	1 525	8.4	8 985	10 769
782 Motor vehicles for the transport of goods	403	515	674	3.7	4 290	4 290
784 Parts and accessories of motor vehicles	205	190	230	1.3	1 937	1 780
971 Gold, non-monetary	414	522	650	3.6	9 615	5 249

## SECTION AND DIVISION OF THE SITC

0	Food and live animals					
00	Live animals other than fish, crustaceans, molluscs and aquatic invertebrates	7	27	10	0.1	82
01	Meat and meat preparations	43	43	52	0.3	430
02	Dairy products and birds' eggs	49	56	53	0.3	460
03	Fish (not marine mammals), crustaceans, molluscs and aquatic invertebrates, and preparations thereof	102	97	100	0.6	1 013
04	Cereals and cereal preparations	51	50	59	0.3	623
05	Vegetables and fruit	119	122	124	0.7	1 303
06	Sugars, sugar preparations and honey	18	20	41	0.2	199
07	Coffee, tea, cocoa, spices, and manufactures thereof	78	69	97	0.5	909
08	Feeding stuff for animals (excl. unmilled cereals)	41	30	57	0.3	481
09	Miscellaneous edible products and preparations	136	113	142	0.8	1 148
	<i>Total Food and live animals</i>	644	627	735	4.1	6 648
1	Beverages and tobacco					
11	Beverages	106	84	105	0.6	1 197
12	Tobacco and tobacco manufactures	15	18	34	0.2	160
	<i>Total Beverages and tobacco</i>	121	102	139	0.8	1 357
2	Crude materials, inedible, except fuels					
21	Hides, skins and furskins, raw	—	—	—	—	1
22	Oil-seeds and oleaginous fruits	5	5	5	—	46
23	Crude rubber (incl. synthetic and reclaimed)	9	10	11	0.1	152
24	Cork and wood	48	48	55	0.3	470
25	Pulp and waste paper	16	14	15	0.1	234
26	Textile fibres and their wastes (not manufactured into yarn or fabric)	9	9	11	0.1	102
27	Crude fertilizers (excl. those of Division 56) and crude minerals (excl. coal, petroleum and precious stones)	9	7	17	0.1	420
28	Metalliferous ores and metal scrap	38	22	33	0.2	509
29	Crude animal and vegetable materials, n.e.s.	27	26	30	0.2	277
	<i>Total Crude materials, inedible, except fuels</i>	162	140	176	1.0	2 211
3	Mineral fuels, lubricants and related materials					
32	Coal, coke and briquettes	1	1	2	—	24
33	Petroleum, petroleum products and related materials	1 903	2 065	2 206	12.2	22 038
34	Gas, natural and manufactured	95	94	208	1.2	2 063
	<i>Total Mineral fuels, lubricants and related materials</i>	1 999	2 160	2 416	13.4	24 125

— nil or rounded to zero (including null cells)

(a) Some SITC sections and divisions exclude commodities subject to a confidentiality restriction. These are included in Division 98. For more information see paragraph 26 of the Explanatory Notes.

(b) Per cent of total merchandise is calculated for the most recent month.

(c) The 'Major commodities' section lists commodities at the SITC Rev 4 3-digit level which are the most significant (by value) or are of particular interest. Abbreviated descriptors have been used. The list of 'Major commodities' is reviewed annually.



	Jan 2010	Feb 2010	Mar 2010	Per cent of total merchandise imports(b)	9 MONTHS ENDED MARCH	
					2009	2010
					\$m	\$m
SECTION AND DIVISION OF THE SITC						
4	Animal and vegetable oils, fats and waxes					
41	1	5	2	—	29	22
42	30	23	27	0.2	408	322
43	Fats and oils (processed), waxes and inedible mixtures or preparations, of animal or vegetable n.e.s.					
	5	3	5	—	51	52
	<i>Total Animal and vegetable oils, fats and waxes</i>					
	36	32	35	0.2	488	395
5	Chemicals and related products, n.e.s.					
51	285	277	305	1.7	2 656	2 433
52	93	72	103	0.6	1 594	832
53	43	48	51	0.3	551	459
54	681	747	846	4.7	6 634	6 848
55	Essential oils and resinoids and perfume materials; toilet, polishing and cleansing preparations					
	127	134	157	0.9	1 379	1 378
56	50	99	194	1.1	1 380	606
57	106	104	125	0.7	1 308	990
58	104	102	115	0.6	1 116	1 032
59	144	145	171	0.9	1 686	1 429
	<i>Total Chemicals and related products, n.e.s.</i>					
	1 633	1 728	2 066	11.4	18 304	16 007
6	Manufactured goods classified chiefly by material					
61	9	12	14	0.1	133	105
62	232	215	278	1.5	2 076	2 084
63	59	62	63	0.3	556	484
64	218	209	233	1.3	2 273	2 043
65	185	194	198	1.1	2 026	1 821
66	183	222	232	1.3	2 193	1 983
67	244	281	305	1.7	4 704	2 361
68	390	165	262	1.5	1 619	1 832
69	373	380	383	2.1	4 506	3 774
	<i>Total Manufactured goods classified chiefly by material</i>					
	1 892	1 740	1 967	10.9	20 087	16 486
7	Machinery and transport equipment					
71	336	415	371	2.1	4 218	3 426
72	469	498	656	3.6	6 358	5 123
73	44	41	52	0.3	602	437
74	General industrial machinery and equipment, n.e.s. and machine parts, n.e.s.					
	939	752	992	5.5	9 227	8 885
75	699	653	807	4.5	6 832	6 463
76	Telecommunications and sound recording and reproducing apparatus and equipment					
	669	657	819	4.5	8 735	8 424
77	Electrical machinery, apparatus, appliances, parts (incl. non-elec. counterparts of electrical domestic equip)					
	712	727	835	4.6	7 787	7 060
78	1 776	2 068	2 564	14.2	17 002	18 152
79	149	83	109	0.6	3 009	1 617
	<i>Total Machinery and transport equipment</i>					
	5 790	5 894	7 205	39.9	63 772	59 587

— nil or rounded to zero (including null cells)

(b) Per cent of total merchandise is calculated for the most recent month.

(a) Some SITC sections and divisions exclude commodities subject to a confidentiality restriction. These are included in Division 98. For more information see paragraph 26 of the Explanatory Notes.

	Jan 2010	Feb 2010	Mar 2010	Per cent of total merchandise imports(b)	9 MONTHS ENDED MARCH	
					.....	
					2009	2010
	\$m	\$m	\$m	%	\$m	\$m
SECTION AND DIVISION OF THE SITC						
8	Miscellaneous manufactured articles					
81	Prefabricated buildings; sanitary, plumbing, heating and lighting fixtures and fittings, n.e.s.					
	56	61	53	0.3	638	583
82	Furniture, parts thereof; bedding, mattresses, mattress supports, cushions and similar stuffed furnishings					
	194	195	163	0.9	2 224	1 963
83	Travel goods, handbags and similar containers					
	56	58	42	0.2	657	584
84	Articles of apparel and clothing accessories					
	507	509	403	2.2	4 345	3 765
85	Footwear					
	136	122	102	0.6	1 141	1 010
87	Professional, scientific and controlling instruments and apparatus, n.e.s.					
	323	368	426	2.4	3 785	3 454
88	Photographic apparatus, equipment and supplies and optical goods, n.e.s., watches and clocks					
	97	96	107	0.6	1 167	1 062
89	Miscellaneous manufactured articles, n.e.s.					
	768	680	756	4.2	8 668	7 678
	<i>Total Miscellaneous manufactured articles</i>					
	2 136	2 090	2 054	11.4	22 625	20 098
9	Commodities and transactions not classified elsewhere in the SITC					
93	Special transactions and commodities not classified according to kind					
	3	4	3	—	45	29
95	Gold coin whether or not legal tender, and other coin being legal tender					
	—	1	1	—	4	7
96	Coin (excl. gold coin), not being legal tender					
	—	—	—	—	1	1
97	Gold, non-monetary (excl. gold ores and concentrates)					
	414	522	650	3.6	9 615	5 249
98	Combined confidential items excl. some of SITC 280 (exports only) and some of SITCs 510 and 520 (imports only)					
	540	235	608	3.4	3 577	4 138
	<i>Total Commodities and transactions not classified elsewhere in the SITC</i>					
	957	763	1 262	7.0	13 242	9 424
<b>Total merchandise imports</b>						
	<b>15 371</b>	<b>15 276</b>	<b>18 055</b>	<b>100.0</b>	<b>172 860</b>	<b>151 655</b>
Balance of Payments Adjustments						
	282	277	302	..	2 380	2 008
Goods Debits (imports) on a Balance of Payments Basis						
	15 653	15 553	18 357	..	175 240	153 663

.. not applicable  
 — nil or rounded to zero (including null cells)

(a) Some SITC sections and divisions exclude commodities subject to a confidentiality restriction. These are included in Division 98. For more information see paragraph 26 of the Explanatory Notes.

(b) Per cent of total merchandise is calculated for the most recent month.

	EXPORTS				IMPORTS (b)				BALANCE OF MERCHANDISE TRADE	
	2008-09	Mar 2010	9 months ended March 2009	9 months ended March 2010	2008-09	Mar 2010	9 Months Ended March 2009	9 Months Ended March 2010	2008-09	9 Months Ended March 2010
	\$m	\$m	\$m	\$m	\$m	\$m	\$m	\$m		
Belgium	1 301	105	1 154	738	1 719	144	1 402	1 208	-418	-471
Brazil	1 483	126	1 316	861	1 041	59	911	445	442	415
Canada	1 557	126	1 200	934	2 437	149	2 040	1 295	-880	-361
China	39 325	3 261	28 341	30 215	37 044	2 662	28 933	27 355	2 281	2 861
Denmark	176	12	134	102	1 070	74	840	872	-894	-770
Egypt(c)	453	38	324	305	33	2	27	21	420	284
Fiji	374	26	299	232	160	14	121	118	215	114
Finland	595	35	531	215	978	58	788	488	-383	-273
France	1 721	56	1 384	759	4 653	360	3 746	2 997	-2 932	-2 238
Germany	2 197	189	1 791	1 088	11 106	972	8 650	7 962	-8 909	-6 874
Hong Kong (SAR of China)	3 192	287	2 418	2 034	1 424	81	1 127	873	1 768	1 162
India	15 425	1 471	11 276	11 553	2 114	184	1 597	1 429	13 311	10 124
Indonesia	4 295	407	3 231	3 188	5 039	436	3 898	3 596	-744	-408
Iran	661	18	462	110	95	3	87	75	567	35
Iraq	194	16	101	184	31	—	31	—	163	184
Ireland	134	12	106	86	2 399	187	1 768	1 696	-2 265	-1 609
Israel	262	37	208	134	715	51	590	425	-453	-291
Italy	1 556	54	1 370	671	5 338	399	4 138	3 630	-3 783	-2 959
Japan	52 768	2 870	44 269	25 932	17 842	1 810	13 840	13 348	34 926	12 584
Korea, Republic of	19 274	1 428	15 597	11 243	6 523	589	4 809	5 083	12 751	6 161
Kuwait	428	52	342	406	426	50	348	305	2	101
Malaysia	3 730	282	2 892	2 273	8 335	655	6 575	5 922	-4 605	-3 650
Mexico	902	46	672	565	1 324	110	1 047	892	-422	-327
Netherlands	3 202	133	2 818	1 340	1 771	125	1 396	1 056	1 431	284
New Zealand	8 549	647	6 674	6 018	7 050	625	5 502	5 122	1 500	896
Pakistan	478	57	318	457	181	18	138	114	296	343
Papua New Guinea	1 611	213	1 186	1 515	3 013	201	2 353	2 203	-1 402	-688
Philippines	1 409	118	1 144	813	605	47	468	349	804	464
Saudi Arabia	2 250	163	1 891	1 120	935	48	722	368	1 315	751
Singapore	5 522	464	4 220	3 905	13 445	1 029	11 313	7 974	-7 923	-4 069
South Africa	2 056	158	1 721	1 227	1 258	101	1 028	762	798	465
Spain	612	38	544	312	1 731	144	1 377	1 252	-1 119	-940
Sweden	566	12	477	240	2 441	167	1 924	1 507	-1 875	-1 267
Switzerland	660	21	393	178	2 481	176	1 863	1 705	-1 821	-1 526
Taiwan	8 126	517	6 487	4 505	4 089	287	3 372	2 569	4 037	1 936
Thailand	4 951	399	3 768	3 600	10 749	1 100	8 652	9 051	-5 799	-5 450
Turkey	811	28	729	194	507	42	397	342	304	-148
United Arab Emirates	3 604	163	3 075	1 436	1 924	155	1 337	1 709	1 680	-273
United Kingdom	11 509	322	10 109	3 600	9 024	466	7 286	4 373	2 484	-773
United States of America	11 600	899	9 395	7 057	25 334	2 288	19 852	16 343	-13 734	-9 285
Viet Nam	1 234	129	887	1 028	4 402	298	3 518	2 220	-3 168	-1 192
Other Countries(b)	10 070	793	8 058	6 138	16 697	1 688	13 048	12 599	-6 626	-6 461
<b>Total</b>	<b>230 829</b>	<b>16 227</b>	<b>183 314</b>	<b>138 513</b>	<b>219 485</b>	<b>18 055</b>	<b>172 860</b>	<b>151 655</b>	<b>11 344</b>	<b>-13 143</b>
APEC	169 417	12 188	133 491	105 525	151 755	12 649	119 906	106 682	17 663	-1 156
ASEAN	21 286	1 813	16 251	14 916	43 640	3 618	35 370	29 848	-22 354	-14 932
Developing Countries	124 497	9 973	94 782	84 133	106 794	8 537	84 550	76 047	17 703	8 086
Least Developed Countries	2 144	134	1 580	1 315	281	35	176	213	1 862	1 102
European Union(d)	24 043	1 000	20 786	9 418	45 402	3 326	35 799	28 914	-21 358	-19 497
OECD	120 069	7 066	99 631	61 524	110 059	9 250	86 045	73 844	10 010	-12 319

— nil or rounded to zero (including null cells)

(a) See Time series spreadsheets for details of all countries.

(b) From September 2008 imports data with confidentiality restrictions 'no commodity details' or 'no value details' are included in Other countries.

(c) Exports of Alumina to Egypt are excluded from country total and included in the 'Other Countries' category.

(d) The European Union includes 27 member countries.

	9 MONTHS ENDED MARCH			
	2008-09	Mar 2010	2009	2010
	\$m	\$m	\$m	\$m
EXPORTS (a)				
New South Wales	38 777	2 445	30 687	22 465
Victoria	20 375	1 886	15 951	13 539
Queensland	56 553	2 994	45 531	29 321
South Australia	9 527	646	7 409	5 787
Western Australia	86 880	6 843	69 165	55 236
Tasmania	3 511	266	2 640	2 090
Northern Territory	6 292	425	5 075	3 653
Australian Capital Territory	11	—	10	4
State not available for publication(b)	797	70	689	396
Re-exports	8 105	653	6 157	6 022
<b>Total</b>	<b>230 829</b>	<b>16 227</b>	<b>183 314</b>	<b>138 513</b>
IMPORTS				
New South Wales	78 994	6 547	61 292	56 292
Victoria	56 457	4 904	44 756	39 683
Queensland	33 972	2 584	26 885	22 958
South Australia	6 867	593	5 499	4 857
Western Australia	33 123	2 495	26 669	20 852
Tasmania	956	56	758	569
Northern Territory	4 347	267	3 531	2 301
Australian Capital Territory	7	1	6	4
State not available for publication(c)	4 761	608	3 462	4 138
<b>Total</b>	<b>219 485</b>	<b>18 055</b>	<b>172 860</b>	<b>151 655</b>

— nil or rounded to zero (including null cells)

(a) State in which the final stage of production or manufacture occurs.

(b) Exports of Alumina to Bahrain, Egypt and Iceland are excluded from the state totals and included in 'State not available for publication'.

(c) From September 2008 imports data with confidentiality restrictions 'no commodity details' or 'no value details' are included in State not available for publication.

## PERIOD AVERAGE EXCHANGE RATES(a), Per Australian dollar

<i>Period</i>	<i>United States dollar</i>	<i>UK pound sterling</i>	<i>Euro</i>	<i>Japanese yen</i>	<i>Special Drawing Right</i>	<i>Trade-weighted index of value of the A\$(b)</i>
FINANCIAL YEAR						
2006-07	0.7863	0.4066	0.6018	93.21	0.5251	64.8
2007-08	0.8968	0.4479	0.6099	98.63	0.5664	69.7
2008-09	0.7456	0.4621	0.5414	73.99	0.4869	60.2
MONTHS						
2009						
January	0.6784	0.4678	0.5095	61.37	0.4478	55.4
February	0.6490	0.4503	0.5074	59.97	0.4386	54.2
March	0.6646	0.4680	0.5093	64.92	0.4483	56.0
April	0.7122	0.4846	0.5398	70.24	0.4773	59.1
May	0.7626	0.4954	0.5596	73.72	0.5022	61.7
June	0.8023	0.4898	0.5721	77.39	0.5194	64.2
July	0.8040	0.4913	0.5709	75.96	0.5180	64.0
August	0.8344	0.5047	0.5852	79.15	0.5349	66.0
September	0.8611	0.5275	0.5915	78.74	0.5461	67.2
October	0.9090	0.5613	0.6130	82.03	0.5716	70.0
November	0.9202	0.5540	0.6166	82.04	0.5754	70.6
December	0.9028	0.5552	0.6174	80.89	0.5693	69.6
2010						
January	0.9148	0.5659	0.6400	83.49	0.5842	70.7
February	0.8863	0.5663	0.6474	79.99	0.5759	69.2
March	0.9120	0.6058	0.6716	82.58	0.5968	71.1

(a) These exchange rates and the trade-weighted index are derived using rates provided by the Reserve Bank of Australia in respect of each trading day.

(b) May 1970 = 100. The Trade-weighted index is reweighted annually on 1 October and on special occasions as required.

	2006-07	2007-08	2008-09	Sep 2009	Oct 2009	Nov 2009	Dec 2009	Jan 2010	Feb 2010
	\$m	\$m	\$m	\$m	\$m	\$m	\$m	\$m	\$m
<b>BALANCE</b>									
<b>On goods and services</b>	—	—	<b>71</b>	<b>10</b>	<b>-25</b>	<b>3</b>	<b>5</b>	<b>131</b>	<b>152</b>
<b>CREDITS</b>									
Total goods and services	—	—	59	5	17	24	37	143	127
<i>Total goods</i>	—	—	-1	-1	2	9	21	110	15
Rural goods	—	—	—	6	2	—	—	-3	-51
Non-rural goods	—	—	-1	-7	—	9	21	113	63
Net exports of goods under merchandising	—	—	—	—	—	—	—	—	—
Non-monetary gold	—	—	—	—	—	—	—	—	3
<i>Total services</i>	—	—	60	6	15	15	16	33	112
<b>DEBITS</b>									
Total goods and services	—	—	12	5	-42	-21	-32	-12	25
<i>Total goods</i>	—	—	—	5	-20	1	-9	10	39
Consumption goods	—	—	—	—	—	—	2	—	3
Capital goods	—	—	—	—	1	1	-1	—	3
Intermediate and other merchandise goods	—	—	—	5	-21	—	-10	10	33
Non-monetary gold debits	—	—	—	—	—	—	—	—	—
<i>Total services</i>	—	—	12	—	-22	-22	-23	-22	-14

— nil or rounded to zero (including null cells)

(a) This table is presented consistent with BPM6 sign conventions. This means for the balance on goods and services a negative revision indicates a decrease in a surplus or an increase in a deficit. For debits a negative revision indicates an increase in debits while a positive revision indicates a decrease in debits.

## EXPLANATORY NOTES

### INTRODUCTION

**1** This publication presents preliminary estimates of Australia's international trade in goods and services on a balance of payments basis (Tables 1–11 and 17) and merchandise import and export statistics on a recorded trade basis (Tables 12–15). In addition, Table 16 Exchange rates and trade-weighted indexes are derived by using exchange rates and indexes provided by the Reserve Bank.

**2** Merchandise trade statistics on a recorded trade basis are compiled from information submitted by exporters and importers or their agents to the Australian Customs and Border Protection Service (Customs and Border Protection). Adjustments for coverage, timing and valuation are made to recorded trade data to convert them to a balance of payments basis. The services data are sourced from the quarterly Survey of International Trade in Services and a range of administrative data and indicator series.

**3** More comprehensive quarterly estimates of Australia's trade in goods and services, together with comprehensive details of Australia's balance of payments are included in the quarterly publication, *Balance of Payments and International Investment Position, Australia* (cat. no. 5302.0). Detailed monthly statistics on merchandise trade are available in Time Series Spreadsheets on the ABS website or by subscription to tailored services. More information on the *International Trade in Services by country, by state and by detailed services category* are available on a financial year basis (cat. no. 5368.0.55.003) with the September issue of this publication and calendar year basis (cat. no. 5368.0.55.004) with the March issue of this publication.

### CONCEPTS, SOURCES AND METHODS

**4** The conceptual framework used in compiling Australia's merchandise trade statistics can be found in *International Merchandise Trade, Australia: Concepts, Sources and Methods, 2001* (cat. no. 5489.0).

**5** The conceptual framework used in compiling Australia's balance of payments statistics is based on the *International Monetary Fund's Balance of Payments and International Investment Position Manual Sixth Edition* (BPM6). Descriptions of the underlying concepts and structure of the balance of payments and the sources, methods and terms used in compiling the estimates are presented in *Balance of Payments and International Investment Position, Australia: Concepts, Sources and Methods, 1998* (cat. no. 5331.0). The current version of this document reflects the international standards prior to BPM6. A revised Concepts, Sources and Methods publication is scheduled for release in late 2010. The *Information paper: Implementation of new international statistical standards in the ABS National and International Accounts, September 2009* (cat. no. 5310.0.55.002) describes the key changes introduced with BPM6.

**6** To bring merchandise trade statistics on a recorded trade basis to a balance of payments basis, timing adjustments are made to ensure that the transaction is recorded in the period in which ownership changed, rather than in the period in which the transaction was recorded by Customs and Border Protection or the period in which the goods arrived in/departed from an Australian port. Adjustments are also made to account for the change of ownership of goods not included in merchandise trade statistics. Chapter 6 of cat. no. 5331.0 provides more detail on the relationship between statistics on international merchandise trade on a recorded trade basis and on a balance of payments basis.

**7** Recorded trade exports data presented for recent months in tables 12–15 of this publication are based on information initially reported by exporters to Customs and Border Protection. At the time of initial reporting to Customs and Border Protection the final prices may not be known for some commodities. Therefore, the information recorded for recent months for commodities like iron ore and coal can include a variety of prices including previous or current contract prices and the prevailing spot prices. Newly negotiated contract prices may not be fully reflected in the data first reported to

## EXPLANATORY NOTES *continued*

### CONCEPTS, SOURCES AND METHODS *continued*

Customs and Border Protection, and to compensate for this, the Balance of Payments series may reflect adjusted price levels.

**8** The Concepts, Sources and Methods publications and information papers are available to download for free from the ABS website. Select *Statistics*, then select *By Catalogue Number*, and then the catalogue numbers as above.

### CLASSIFICATIONS

**9** The merchandise trade data on a recorded trade basis are presented using the following commodity classifications:

- the Harmonised System 2007 (available on request)
- the Standard International Trade Classification (SITC Revision 4)
- the Classification by Broad Economic Categories (BEC)
- the industry classification: Australian and New Zealand Standard Industrial Classification, 2006 (ANZSIC 06) from July 2005.

**10** The Balance of Payments Goods and Services series are presented according to three classifications with the goods classifications derived from SITC Revision 4 and BEC. The classifications are:

- for goods:
  - the Balance of Payments Commodities for Exports (BoPCE)
  - the Balance of Payments Broad Economic Categories for Imports (BoPBEC),
- for services:
  - the Extended Balance of Payments Services Classification (EBOPS).

### ACCURACY, RELIABILITY AND REVISIONS

**11** While every effort is made to ensure the accuracy and reliability of estimates, most series are subject to revision as more complete and accurate information becomes available. Care should be exercised in the use and interpretation of estimates in this publication. The transactions occurring in international trade in goods and services are of many different kinds, and therefore the compilation of trade estimates entails the use of a very wide range of statistical data of varying degrees of accuracy and timeliness. For further information on the monthly services series, see paragraph 25.

**12** The revisions are applied differently for merchandise trade and Balance of Payments series. Each month, merchandise trade data are revised for the previous six months to incorporate latest available data.

**13** For the Balance of Payments Goods and Services series, in original terms, no revisions are applied in the July, October, January or April issues. This is to ensure the monthly series align with the comparable series in the quarterly publication. In the September issue revisions can be applied to the four previous financial years. In other issues revisions can be applied to the previous and current financial years to incorporate the latest available survey and administrative data.

**14** In seasonally adjusted and trend terms, revisions may occur at any time point but tend to focus on the most recent estimates. Please also refer to paragraphs 17 (seasonal adjustment) and 19 (trend estimates) below.

### SIGN CONVENTION

**15** In keeping with BPM6 conventions, balance of payments basis credit entries are shown with an implied positive sign and debit items are shown as negative entries. For statistics on a recorded trade basis, both imports and exports are shown without sign. The calculation of percentage changes on balance of payments debit items are made without regard to sign. References to balance of payments debit items in Key Figures, Key Points, and Analysis and Comments are also made without regard to sign.

### SEASONALLY ADJUSTED AND TREND ESTIMATES

**16** The estimates of international trade in goods and services on a balance of payments basis are seasonally adjusted, however the merchandise exports and imports statistics on a recorded trade basis are not. Monthly original estimates are volatile, being subject to calendar-related and large irregular influences. Seasonally adjusted estimates are derived



## EXPLANATORY NOTES *continued*

### SEASONALLY ADJUSTED AND TREND ESTIMATES *continued*

by estimating and removing from the original series systematic calendar related effects, such as seasonal (e.g. Christmas), trading day and moving holiday (e.g. Easter) influences. Seasonal adjustment does not aim to remove the irregular or non-seasonal influences which may be present in any particular month. These irregular influences may reflect both random economic events and difficulties of statistical recording.

**17** The seasonally adjusted statistics in this publication use the concurrent seasonal adjustment technique and Autoregressive Integrated Moving Average (ARIMA) modelling to estimate factors for the current and previous months. Under concurrent seasonal adjustment, the estimates of seasonal factors are fine tuned as new or revised original estimates become available each period. The seasonally adjusted estimates are subject to revisions at each reference month as the estimates of seasonal factors are improved.

**18** ARIMA modelling relies on the characteristics of the series being analysed to project future period data. ARIMA modelling is used on a case-by-case basis where it results in reduced revisions to seasonally adjusted series when subsequent data become available. The projected values are temporary, intermediate values, that are only used internally to improve the estimation of the seasonal factors. The projected data do not affect the original estimates and are discarded at the end of the seasonal adjustment process. The ARIMA model is assessed as part of the annual review and, following the 2009 annual review, 40 of the 45 directly seasonally adjusted trade in goods and services time series use an ARIMA model.

**19** The month-to-month movements of the seasonally adjusted estimates may not be reliable indicators of underlying behaviour because they include irregular or non-seasonal movements. Trend estimates reduce the effect of these movements as they are derived by applying a 13-term Henderson moving average to the seasonally adjusted series. The 13-term Henderson moving average (like all Henderson averages) is symmetric, but as the end of a time series is approached, asymmetric forms of the average are applied. While the asymmetric weights enable trend estimates for recent months to be produced, it does result in revisions to the estimates for the most recent six months as additional observations become available. Revisions to trend estimates can also occur because of revisions to the original data and as a result of the re-estimation of the seasonal factors. Trend estimates should be used with caution, especially around the time of unusual influences, until these have been appropriately taken into account.

**20** Information papers and articles on time series methods are available on the ABS website:

- for seasonal adjustment methods, see *Information Paper: An Introductory Course on Time Series Analysis, Jan 2005* (cat. no. 1346.0.55.001) and *Time Series Analysis Frequently Asked Questions, 2003* (cat. no. 1346.0.55.002)
- for ARIMA modelling, see *Feature article: Use of ARIMA modelling to reduce revisions* in the October 2004 issue of *Australian Economic Indicators* (cat. no. 1350.0)
- for trend estimates methods, see *Information Paper: A Guide to Interpreting Time Series – Monitoring Trends* (cat. no. 1349.0)
- alternatively contact the Assistant Director, Time Series Analysis on (02) 6252 6345 or e-mail <time.series.analysis@abs.gov.au>.

### ECONOMIC TERRITORY

**21** In accordance with BPM6 definitions, Australia's economic territory, on a balance of payments basis, is the area under the effective control of the Australian government. It includes the land area, airspace, territorial waters, including jurisdiction over fishing rights and rights to fuels and minerals. Australian economic territory also includes territorial enclaves in the rest of the world. These are clearly demarcated areas of land, located in other countries and which are owned or rented by the Australian government

## EXPLANATORY NOTES *continued*

### ECONOMIC TERRITORY

*continued*

for diplomatic, military, scientific or other purposes. Specifically, the economic territory of Australia consists of:

- Geographic Australia which includes Cocos (Keeling) Islands and Christmas Island;
- Norfolk Island;
- Australian Antarctic Territory;
- Heard Island and McDonald Islands;
- Territory of Ashmore Reef and Cartier Island;
- Coral Sea Islands;
- Australia's territorial enclaves overseas; and
- the Joint Petroleum Development Area (joint territory between Australia and East Timor (Timor-Leste)).

**22** Because of administrative complexities and measurement difficulties, Norfolk Island transactions with the rest of the world will not always be captured in all relevant Balance of Payments statistics. Most of the transactions involving Norfolk Island are not material to Australia's trade performance and not capturing these transactions will not distort these statistics. However, any significant transactions will be identified and included in the relevant statistics.

### COMMODITY BREAKDOWN OF GOODS

**23** For details of the classifications used to present goods exports (credits) and imports (debits) on a balance of payments basis, see tables 6.6 and 6.7, respectively, in *Balance of Payments and International Investment Position, Australia: Concepts, Sources and Methods*, 1998 (cat. no. 5331.0).

**24** The recorded trade statistics shown in tables 12 and 13 are classified by the Standard International Trade Classification (SITC). Imports and exports of goods at a more detailed level are available from the Time Series spreadsheets on the ABS website. All data from July 2005 are presented according to SITC Rev 4 and data prior to July 2005 are presented according to SITC Rev 3. For details refer to the 'Classifications and Standards Update' in the July 2008 issue of this publication.

### MONTHLY SERVICES SERIES

**25** Monthly indicators for many of the services components that are only surveyed quarterly are not available. Monthly estimates for the freight and other transportation components of services credits in table 9 are derived by dividing the quarterly estimate by three. Freight debits are derived directly from imports data for the reference month as a difference between total merchandise cost, insurance and freight (CIF) and free on board (FOB), adjusted to reflect timing and processing adjustments. For freight credits and other transportation credits and debits, estimates are derived by extrapolating the last quarter's data by an average of movements for the same quarter over the three previous years, and then dividing the estimate by three. Similarly other services estimates are derived by extrapolating the last quarter's data by an average of movements for the same quarter over the previous three years, and then dividing the estimate by three.

### CONFIDENTIALITY OF MERCHANDISE TRADE STATISTICS

**26** The release of statistics for certain merchandise trade commodities is restricted in order to prevent the identification of the activities of an individual business, where this is requested by the business concerned. These restrictions do not affect the total value of exports and imports, but they can affect statistics at the country, state and commodity levels. Imports data that have the confidentiality restrictions 'No commodity details' or 'No value details' are aggregated into a single confidential commodity code. For data prior to September 2008, these data are added back into the appropriate state total and country total (i.e. these totals show the correct level of trade). From September 2008 these confidential data are not added back. Instead the confidential data are published as 'No country details' in the country totals and 'State not available for publication' in the state totals. Therefore, country and state totals from September 2008 may not represent the actual amount of trade in each country/state but only the trade in commodities without a 'No commodity details' or 'No value details' restriction. For information on the

## EXPLANATORY NOTES *continued*

### CONFIDENTIALITY OF MERCHANDISE TRADE STATISTICS *continued*

confidentiality restrictions applied to the merchandise trade statistics in this publication, refer to the current issue of *International merchandise trade: Confidential Commodities List (CCL)* (cat. no. 5372.0.55.001).

### TOURISM RELATED SERVICES

**27** The tourism related services memorandum items provide timely indicators of the movements in tourism related activities, not an absolute measure of the level of these activities. The tourism related indicator has been derived by combining total travel services (business, education-related and other personal travel) and passenger transportation services (which includes agency fees and commissions for air transport).

### SERVICES BY STATE AND BY PARTNER COUNTRY

**28** Annual services data by state, by country and detailed services are released twice yearly. Calendar year data are usually released with the March issue of this publication and financial year data are usually released with the September issue. Refer to Time series data for details.

**29** Services credits are classified by the state of provision, while services debits are classified by the state of consumption. The state allocations for transportation, travel, postal and courier, and telecommunication services are based on a number of indicators including merchandise trade statistics by state, overseas passenger arrivals and departures by state of clearance and data provided by the Department of Immigration and Citizenship. The allocation for other services (about 25% of all trade in services) is primarily based on the location of the business reporting the information, which serves as a proxy for the state of provision/consumption of that service. The data should be used with care but are considered suitable for analysis over time.

**30** A comprehensive explanation of the data sources used and the methodology applied in the compilation of partner country statistics is provided in Chapter 17 of *Balance of Payments and International Investment Position, Australia – Concepts, Sources and Methods* (cat. no. 5331.0). Approximately 7% of total services credits and 5% of total services debits for both 2007–08 and 2008–09 were either confidential, or unable to be allocated to individual countries.

### ABS DATA AVAILABLE

**31** More detailed balance of payments and recorded merchandise trade data, including forward seasonal factors are available as time series spreadsheets or data cubes from the ABS website. Merchandise trade data by commodity, country and state that are not on the ABS website may be available on request. Inquiries should be made to the National Information and Referral Service as shown on the back of this publication.

### RELATED PRODUCTS AND PUBLICATIONS

**32** Users may also wish to refer to the following publications which can be downloaded free of charge from the ABS website by using the 'Statistics' tab and selecting the relevant catalogue number:

- *Balance of Payments and International Investment Position, Australia* (cat. no. 5302.0) – issued quarterly
- *International Merchandise Imports, Australia* (cat. no. 5439.0) – issued monthly
- *International Trade Price Indexes, Australia* (cat. no. 6457.0) – issued quarterly
- *Balance of Payments and International Investment Position, Australia: Concepts, Sources and Methods* (cat. no. 5331.0)
- *Information Paper: Quality of Australian Balance of Payments Statistics* (cat. no. 5342.0)
- *International Merchandise Trade, Australia: Concepts, Sources and Methods* (cat. no. 5489.0)
- *A Guide to Australian Balance of Payments and International Investment Position Statistics* (cat. no. 5362.0.55.001).

## EXPLANATORY NOTES *continued*

---

### RELATED PRODUCTS AND PUBLICATIONS *continued*

**33** Current publications and other products released by the ABS are available from the Statistics tab on the ABS website. The ABS also issues a daily *Release Advice* on the website which details products to be released in the week ahead. A *foreign trade theme page* and a *balance of payments theme page* are available on the ABS website. Select *Topics @ a Glance – Economy – Foreign Trade* or *Balance of Payments*. This page provides direct links to all foreign trade and balance of payments related data and publications, recent changes and forthcoming events, links to relevant websites and a range of other information about the Australian International Accounts.

### ROUNDING

**34** Where figures have been rounded, discrepancies may occur between sums of the component items and totals. Percentage movements are calculated from data at the level of precision presented in this publication (i.e. \$m) except for international merchandise trade tables.

### ABBREVIATIONS

\$b	billion (thousand million) dollars
\$m	million dollars
ABS	Australian Bureau of Statistics
APEC	Asia Pacific Economic Co-operation
ASEAN	Association of South-East Asian Nations
n.e.s.	not elsewhere specified
n.i.e.	not included elsewhere
OECD	Organisation for Economic Co-operation and Development
SAR	Special Administrative Region
SITC	Standard International Trade Classification

## APPENDIX RELATED ARTICLES

<i>Article</i>	<i>Source(a)</i>	<i>Issue</i>
<b>Investment</b>		
Foreign ownership of equity	5302.0	Sep qtr 2007
Kangaroo bonds	1301.0	2006
Foreign currency exposure	5308.0	Mar qtr 2005
Gross external debt	5302.0	Sep qtr 2003
<b>Balance of payments</b>		
International comparison of balance of payments statistics	(b) 5363.0	1998–99
<b>Merchandise trade</b>		
Export And Import Invoice Currencies, Dec 2009	5368.0	Dec 2009
Characteristics of Australian Exporters	5368.0.55.006	2008–09
Export and import invoice currencies, 2007	5368.0	Dec 2007
100 years of international trade statistics	5368.0	Oct 2007
New methodology for deriving counts of Australian exports	5368.0	Feb 2006
Australia's Importers, 2003–04	5368.0	Nov 2004
Australia's Exporters, 2003–04	5368.0	Oct 2004
Australia's trade with the USA	5368.0	Mar 2004
Foreign ownership of Australian exporters and importers	5496.0.55.001	2002–03
Major commodities traded by Australia, 1991 to 2000	(b) 5422.0	Dec qtr 2000
<b>Trade in services</b>		
International trade in services by partner country, 2006, preliminary	5368.0	Dec 2006
Changes to International trade in services statistics, August 2006	5368.0	Aug 2006
Changes to International trade in services travel statistics	5368.0	Aug 2005
<b>Finance</b>		
Impact of the farm season on Australian production in 2002–03 and 2003–04	1301.0	2005
Recent trends in construction and first home buyers finance	5609.0	Mar 2002
Household sector data in the financial accounts	5232.0	Mar qtr 2002
<b>Technical information</b>		
Implementation of new international statistical standards in ABS National and International Accounts, September 2009	5310.0.55.002	Oct 2009
Estimation of Workers' Remittances based on Balance of Payments and International Investment Position Manual, Sixth Edition	5302.0.55.003	Sep 2009
Impact of revised international standards on monthly International Trade in Goods and Services	5368.0.55.014	Aug 2009
Changes to International Trade in Goods Statistics - Countries and Ports	5368.0.55.013	Jul 2009
Revisions to international standards in quarterly Balance of Payments and International Investment Position statistics from September 2009	5302.0.55.002	2009
Revisions to international standards in monthly international trade in goods and services statistics from August 2009	5368.0.55.012	2009
Changes to International Trade in Goods Industry Statistics, July 2009	5368.0.55.011	Dec 2008
Technical note 1 - Income on debt	5302.0	Jun qtr 2008
Technical note 2 - Use of CDI data	5302.0	Jun qtr 2008
Impact of introducing Revision 4 of the Standard International Trade Classification	5368.0.55.010	2008
Changes to international trade statistics July 2008	5368.0.55.009	2007–08
Introduction of revised international standards in ABS economic statistics in 2009	5310.0.55.001	2007
Changes on 1 January 2007 to Statistical Codes in the AHECC and the Customs Tariff	1233.0.55.001	Nov 2006
ABS implementation in January 2007 of revisions to international trade classifications, 2007	5368.0.55.005	Jun 2006
Revised treatment of Goods for Processing in Merchandise Trade and Balance of Payments Statistics	5368.0	May 2006
Impact of Customs and ABS changes on import statistics from October 2005	5439.0	Oct 2005
ABS management of the impact of the implementation of the imports component of the New Customs System	5439.0	Aug 2005
Changes to country and port classifications	5368.0	May 2003
Implementation of New Customs Systems	5368.0	Aug 2004
The effect of customs changes on export statistics	5422.0	Jun qtr 2002
Data confidentiality	5422.0	Dec qtr 1999

- (a) In the ABS web site home page, select Statistics; By Catalogue Number; and click on the specified catalogue number and issue. Note: in some instances, a particular issue of the publication can be found in the Past & Future Releases page of the catalogue.
- (b) This article can be found in pdf format by referring to the Downloads page of the specified issue of this publication on the ABS web site.





## FOR MORE INFORMATION . . .

*INTERNET*      **www.abs.gov.au** the ABS website is the best place for data from our publications and information about the ABS.

### INFORMATION AND REFERRAL SERVICE

Our consultants can help you access the full range of information published by the ABS that is available free of charge from our website. Information tailored to your needs can also be requested as a 'user pays' service. Specialists are on hand to help you with analytical or methodological advice.

*PHONE*                      1300 135 070

*EMAIL*                      [client.services@abs.gov.au](mailto:client.services@abs.gov.au)

*FAX*                              1300 135 211

*POST*                              Client Services, ABS, GPO Box 796, Sydney NSW 2001

## FREE ACCESS TO STATISTICS

All statistics on the ABS website can be downloaded free of charge.

*WEB ADDRESS*      [www.abs.gov.au](http://www.abs.gov.au)